



# Liikkalankuja 4, Vartiokylä, Helsinki



**Helposti paras koti**

**Lumo**



## **As Oy Liikkalankuja 4, 00950 Helsinki**

**Urakoitsija:**  
Lehto

**Vuokraus:**  
Lumo-kotikeskus, Helsinki

Esite pohjautuu suunnittelun ja rakentamisen aikaisiin tietoihin. Visualisointikuvat ovat arkkitehdin ja taiteilijan näkemys kohteesta, eivätkä välttämättä kaikin osin vastaa sellaisenaan todellisuutta. Pidätämme oikeuden muutoksiin.

## **Helposti paras koti**

# **Lumo**

# Huoneistoluettelo: Liikkalankuja 4, Vartiokylä, Helsinki

## A-talo

Kerros	Asunto	Tyyppi	Pinta-ala m <sup>2</sup>
2	A 1	3H+KT	58,5
2	A 2	1H+KT	25,0
2	A 3	1H+KT	25,0
2	A 4	4H+KT	69,0
2	A 5	2H+KT	39,5
2	A 6	1H+KT	29,0
2	A 7	3H+KT	51,0
3	A 8	3H+KT	58,5
3	A 9	1H+KT	25,0
3	A 10	1H+KT	25,0
3	A 11	4H+KT	69,0
3	A 12	2H+KT	39,5
3	A 13	1H+KT	29,0
3	A 14	3H+KT	51,0
4	A 15	3H+KT	58,5
4	A 16	1H+KT	25,0
4	A 17	1H+KT	25,0
4	A 18	4H+KT	68,5
4	A 19	2H+KT	39,5
4	A 20	1H+KT	29,0
4	A 21	3H+KT	51,0
5	A 22	3H+KT	58,5
5	A 23	1H+KT	25,0
5	A 24	1H+KT	25,0
5	A 25	2H+KT	43,0
5	A 26	2H+KT	39,5
5	A 27	1H+KT	29,0
5	A 28	3H+KT	51,0

## B-talo

Kerros	Asunto	Tyyppi	Pinta-ala m <sup>2</sup>
2	B 29	3H+KT	58,5
2	B 30	1H+KT	24,0
2	B 31	1H+KT	24,0
2	B 32	1H+KT	24,0
2	B 33	4H+KT	75,0
2	B 34	1H+KT	26,0
2	B 35	1H+KT	26,0
2	B 36	3H+KT	51,0
3	B 37	3H+KT	58,5
3	B 38	1H+KT	24,0
3	B 39	1H+KT	24,0
3	B 40	1H+KT	24,0
3	B 41	4H+KT	75,0
3	B 42	1H+KT	26,0
3	B 43	1H+KT	26,0

3	B 44	3H+KT	51,0
4	B 45	3H+KT	58,5
4	B 46	1H+KT	24,0
4	B 47	1H+KT	24,0
4	B 48	1H+KT	24,0
4	B 49	4H+KT	75,0
4	B 50	1H+KT	26,0
4	B 51	1H+KT	26,0
4	B 52	3H+KT	51,0
5	B 53	3H+KT	58,5
5	B 54	1H+KT	24,0
5	B 55	1H+KT	24,0
5	B 56	2H+KT	37,0
5	B 57	1H+KT	36,0
5	B 58	1H+KT	26,0
5	B 59	1H+KT	26,0
5	B 60	3H+KT	51,0

## C-talo

Kerros	Asunto	Tyyppi	Pinta-ala m <sup>2</sup>
2	C 61	3H+KT	58,5
2	C 62	1H+KT	24,0
2	C 63	1H+KT	24,0
2	C 64	1H+KT	24,0
2	C 65	4H+K	75,0
2	C 66	2H+KT	44,0
2	C 67	1H+KT	26,0
3	C 68	3H+KT	58,5
3	C 69	1H+KT	24,0
3	C 70	1H+KT	24,0
3	C 71	1H+KT	24,0
3	C 72	4H+K	75,0
3	C 73	2H+KT	44,0
3	C 74	1H+KT	26,0
4	C 75	3H+KT	58,5
4	C 76	1H+KT	24,0
4	C 77	1H+KT	24,0
4	C 78	1H+KT	24,0
4	C 79	4H+K	75,0
4	C 80	2H+KT	44,0
4	C 81	1H+KT	26,0
5	C 82	3H+KT	58,5
5	C 83	1H+KT	24,0
5	C 84	1H+KT	24,0
5	C 85	2H+KT	37,0
5	C 86	1H+KT	36,0
5	C 87	2H+KT	44,0
5	C 88	1H+KT	26,0



# Materiaalit ja pohjapiirrokset

Esite pohjautuu suunnittelun ja rakentamisen aikaisiin tietoihin. Visualisointikuvat ovat arkkitehdin ja taiteilijan näkemys kohteesta, eivätkä välttämättä kaikin osin vastaa sellaisenaan todellisuutta.

Pidätämme oikeuden muutoksiin.

## Helposti paras koti

**Lumo**

# Liikkalankuja 4, **A**- ja **C**-talo

## Sisustusmateriaalit

### Lattiat

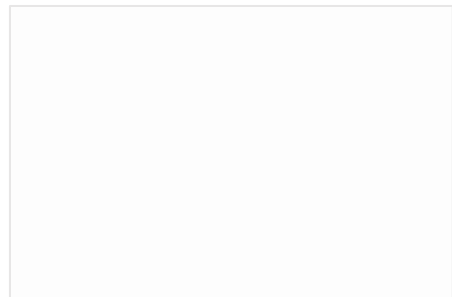
#### Laminaatti

käyttöluokka 32, paksuus 8mm viistetty



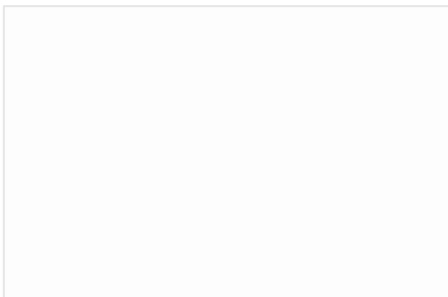
Perfect  
3902 Oak Copenhagen

### Keittiön ovet



Valkoinen  
matta F8100

### Keittiön työtasot



Formica laminaatti F8100SHL

### Vetimet



Hiipakka Tango alumiini

# Liikkalankuja 4, **A**- ja **C**-talo

## Sisustusmateriaalit

### Keittiön ovet (kolmiot)



Novart valkoinen 969 matta

### Keittiön työtasot (kolmiot)



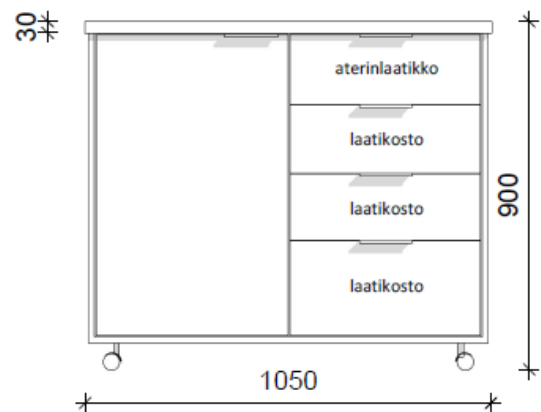
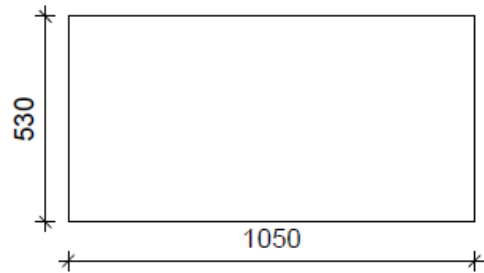
Novart A635

### Vetimet (kolmiot)



Alumiininen lippavedin SL13

### Rullasaareke, huoneisto A25



# Liikkalankuja 4, **B**-talo

## Sisustusmateriaalit

### Lattiat

#### Laminaatti

käyttöluokka 32, paksuus 8 mm viistetty



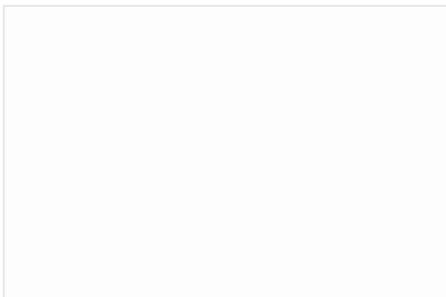
Perfect  
3201 Oak Reykjavik

### Keittiön ovet



Plaster Grey  
8085

### Keittiön työtasot



Formica laminaatti F8100SHL

### Vetimet

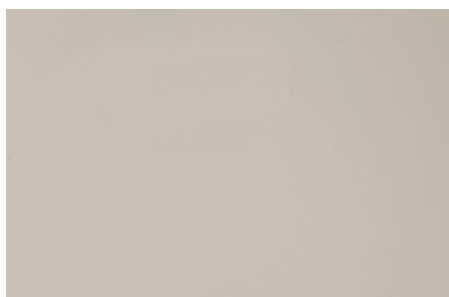


Hiipakka Tango alumiini

Liikkalankuja 4, **B**-talo

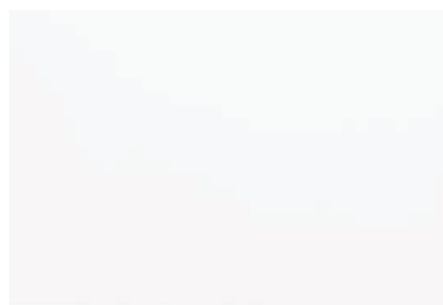
Sisustusmateriaalit

Keittiön ovet (kolmiot)



Novart harmaa 685

Keittiön työtasot (kolmiot)



Novart A635

Vetimet (kolmiot)



Alumiininen lippavedin  
SL13



# Liikkalankuja 4, **A-**, **B-** ja **C-**talot

## Sisustusmateriaalit

### Keittiön varusteet ja kodinkoneet

Keittiön hana



Gustavsberg Nordic³

Allas



Kivikomposiittia  
Blanco Dalago 45  
anthrazit

Liesituuletin



Swegon Casa Salsa

Astianpesukone



Whirlpool integroitu  
astianpesukone  
45 cm tai 60 cm  
huoneistosta riippuen

Whirlpool  
erikoishiljainen  
astianpesukone  
korkeintaan 47db!

Jää-pakastinkaappi

1H+KT



Whirlpool  
jääkaappipakastin  
omalla ovella  
ART 3751

2H+KT JA ISOMMAT



Whirlpool  
jääkaappipakastin  
ART 66011

Uuni

1H+KT



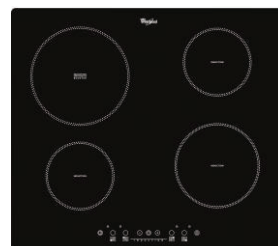
Whirlpool integroitu  
mikro/uuni  
yhdistelmä  
AMW 9607/IX

2H+KT JA ISOMMAT



Whirlpool kalusteisiin  
sijoitettu uuni  
OAKZ9 6180  
HM IX

2H+KT JA ISOMMAT



Whirlpool  
4-paikkainen liesi  
WS Q2160 NE

1H+KT



Whirlpool  
2-paikkainen  
liesi  
WS Q0530 NE

Induktiotaso

# Liikkalankuja 4, **A**- ja **C**-talo

## Sisustusmateriaalit

### Eteisen ja makuuhuoneen kaapit

Novart, Petra  
141 melamiiniovi  
valkoinen



Valkoinen  
reunanauha valkoinen  
141

HR2

Petra

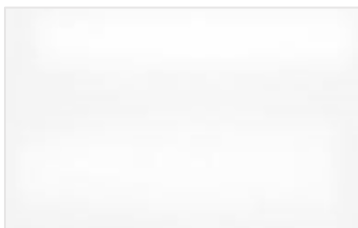
Aino

Novart  
WL04 valkoinen



### Kylpyhuone

Seinälaatta  
Suoraladonta vaakaan,  
pystysaumat samaan linjaan  
ja saumat laatan sävyyn.



Salla White Glossy, kiiltävä  
25x40 cm

Lattialaatta  
10 cm x 10 cm,  
Saumat lattian sävyyn



Ideo Jamaica Grey

### Alakatto



Kuultovalkoinen  
mänty  
(STS-profiili)

# Lumo

Pidätämme oikeuden muutoksiin!

# Liikkalankuja 4, **B**-talo

## Sisustusmateriaalit

### Eteisen ja makuuhuoneen kaapit

Novart, Petra 141  
melamiiniovi  
valkoinen



Valkoinen  
reunanauha valkoinen  
141

HR2

Petra

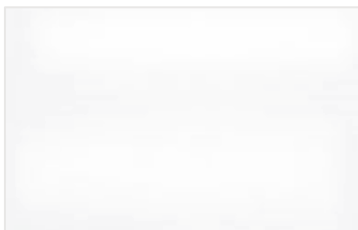
Aino

Novart WL04 valkoinen



### Kylpyhuone

Seinälaatta  
Suoraladonta vaakaan,  
pystysaumat samaan linjaan ja  
saumat laatan sävyyn.



Salla White Glossy,  
kiiltävä 25x40 cm

Lattialaatta  
10 cm x 10 cm,  
Saumat lattian sävyyn



Ideo Jamaica Black

### Alakatto



Valkoinen MDF  
(STP-profiili)

# Lumo

Pidätämme oikeuden muutoksiin!

# Liikkalankuja 4, **A-**, **B-** ja **C-**talot

## Sisustusmateriaalit

### Kylpyhuoneen kalusteet



Termostaatti  
Gustavsberg  
Nautic



Pesuallashana  
Gustavsberg Nautic  
käsisuihkulla (PKV)



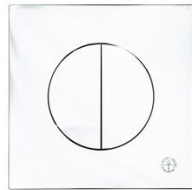
Peilikaappi



Valumarmoriallas  
Lomia



WC-istuin  
Villeroy & Boch  
O.Novo Compact



Painonappi  
Gustavsberg  
Triomont



WC-paperiteline  
Base 200 kromi



Pyyhekoukku Base 200  
kromi 2- ja 4-osainen



Suihkuseti  
Gustavsberg Nautic  
+ suihkukulma  
PISARA 4+4

# Asunto Oy Helsingin Liikkalankuja 4 Talo A

## JULKISIVUT 1/2



Julkisivu koilliseen

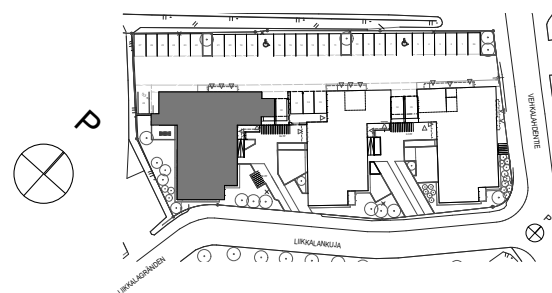


Julkisivu kaakkoon

Mittakaava 1:200 10m

5.9.2022

Lumo



# Asunto Oy Helsingin Liikkalankuja 4 Talo A

## JULKISIVUT 2/2



Julkisivu lounaaseen

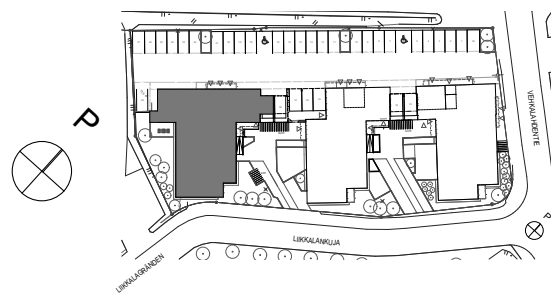


Julkisivu luoteeseen

Mittakaava 1:200 10m

5.9.2022

Lumo



# Asunto Oy Helsingin Liikkalankuja 4 Talo B

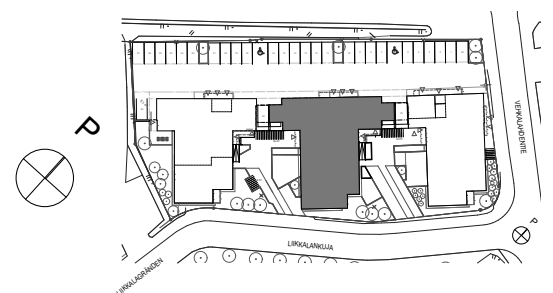
## JULKISIVUT 1/2



Julkisivu koilliseen



Julkisivu kaakkoon



Mittakaava 1:200 10m

5.9.2022

Lumo

# Asunto Oy Helsingin Liikkalankuja 4 Talo B

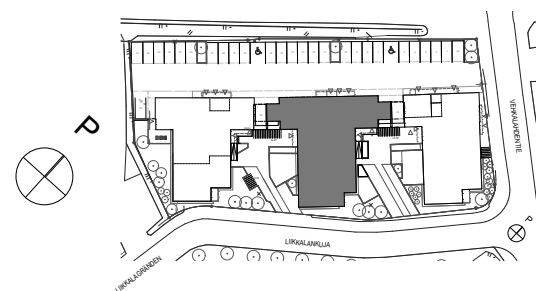
## JULKISIVUT 2/2



Julkisivu lounaaseen



Julkisivu luoteeseen



Mittakaava 1:200 10m

5.9.2022

Lumo



# Asunto Oy Helsingin Liikkalankuja 4 Talo C

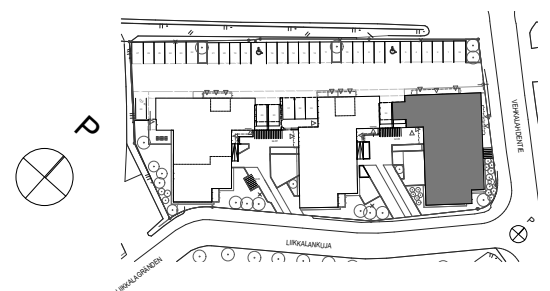
## JULKISIVUT 1/2



Julkisivu koilliseen



Julkisivu kaakkoon



Mittakaava 1:200 10m

5.9.2022

Lumo

# Asunto Oy Helsingin Liikkalankuja 4 Talo C

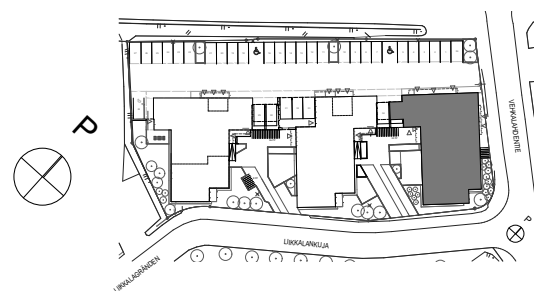
## JULKISIVUT 2/2



Julkisivu lounaaseen



Julkisivu luoteeseen



Mittakaava 1:200 10m

5.9.2022

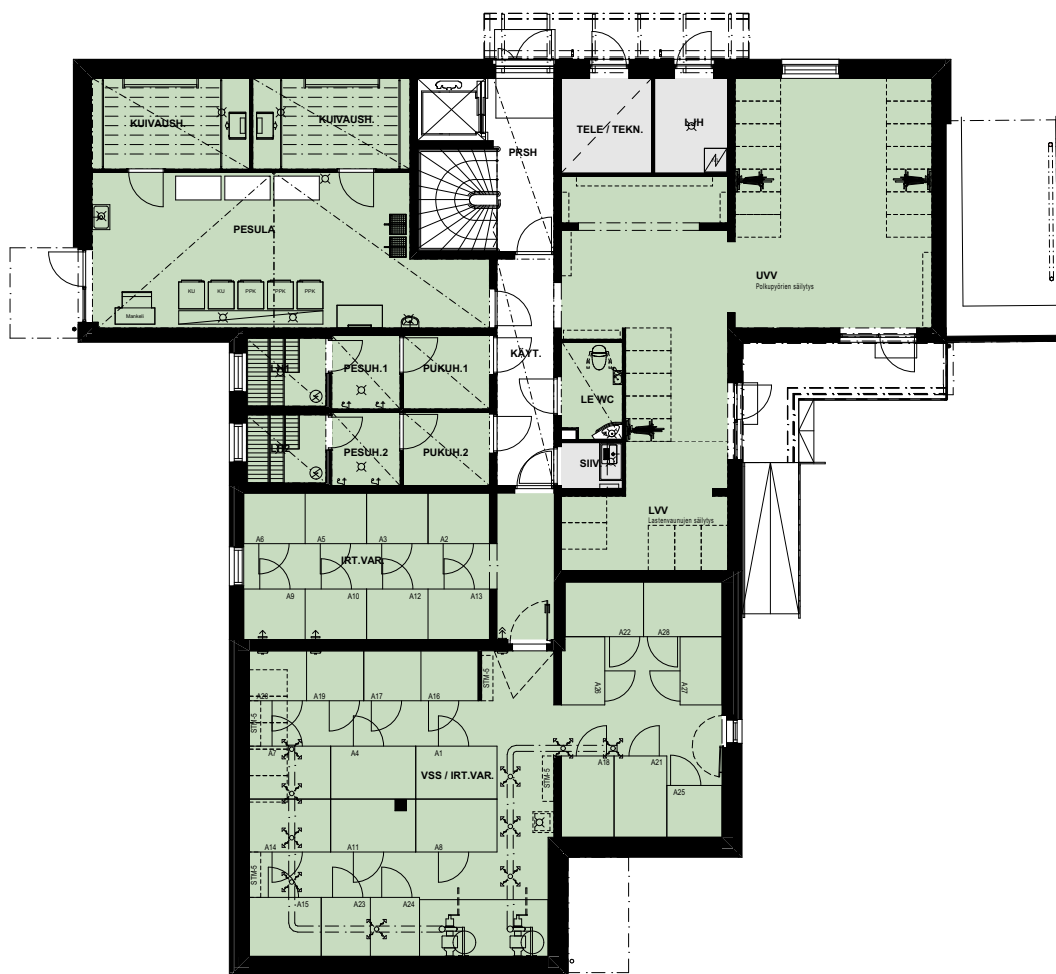
Lumo

# Asunto Oy Helsingin Liikkalankuja 4 ASEMAPIIRROS



# Asunto Oy Helsingin Liikkalankuja 4 Talo A

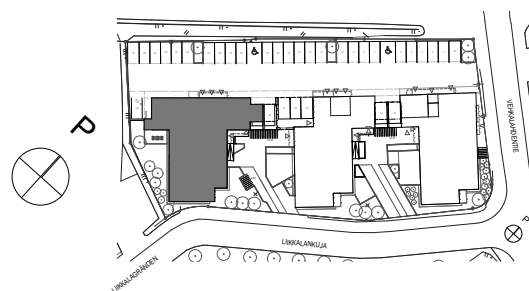
## 1. KERROS



Mittakaava 1:200 10m

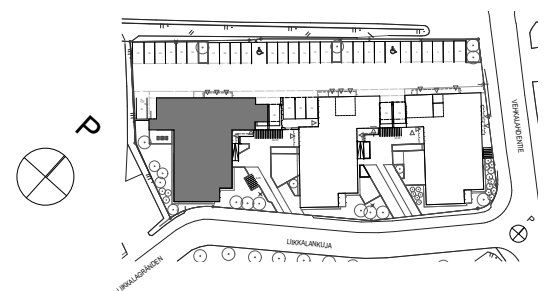
5.9.2022

Lumo



# Asunto Oy Helsingin Liikkalankuja 4 Talo A

## 2. KERROS



Mittakaava 1:200 10m

5.9.2022

Lumo

# Asunto Oy Helsingin Liikkalankuja 4 Talo A

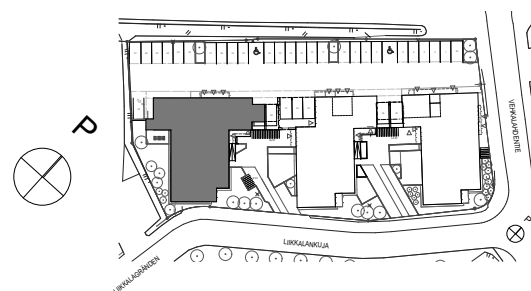
## 3. KERROS



Mittakaava 1:200 10m

5.9.2022

Lumo



# Asunto Oy Helsingin Liikkalankuja 4 Talo A

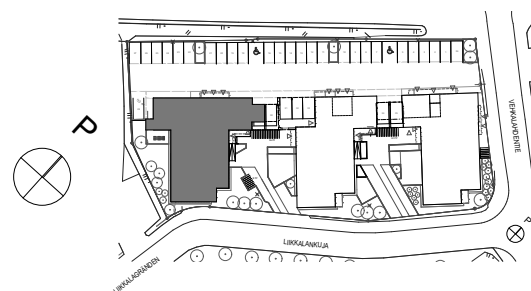
## 4. KERROS



Mittakaava 1:200 10m

5.9.2022

Lumo



# Asunto Oy Helsingin Liikkalankuja 4 Talo A

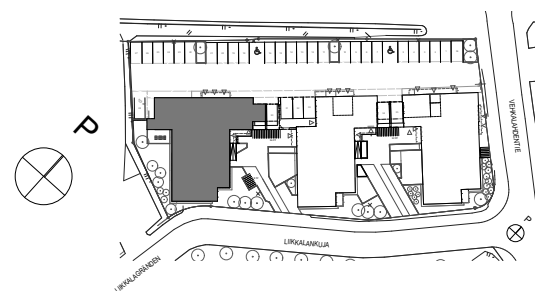
## 5. KERROS



Mittakaava 1:200 10m

5.9.2022

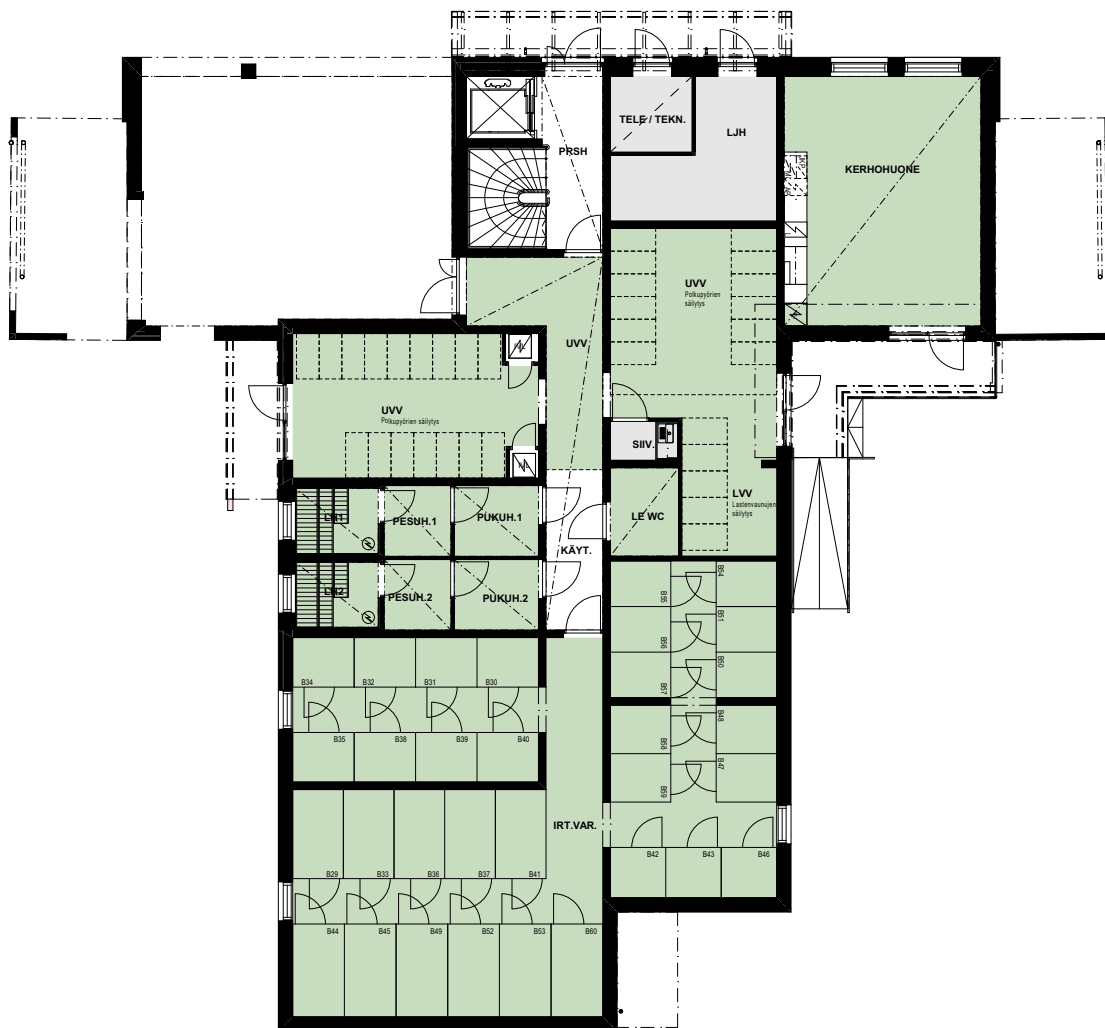
Lumo





# Asunto Oy Helsingin Liikkalankuja 4 Talo B

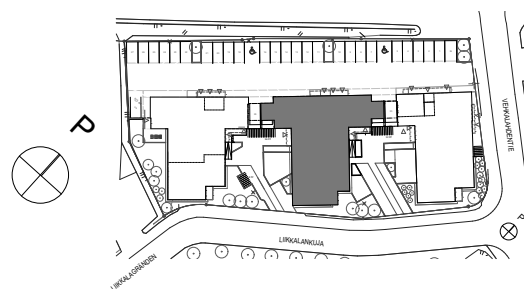
## 1. KERROS



Mittakaava 1:200 10m

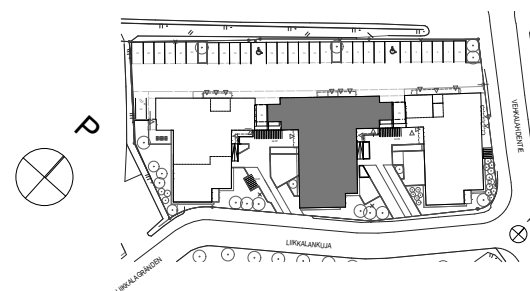
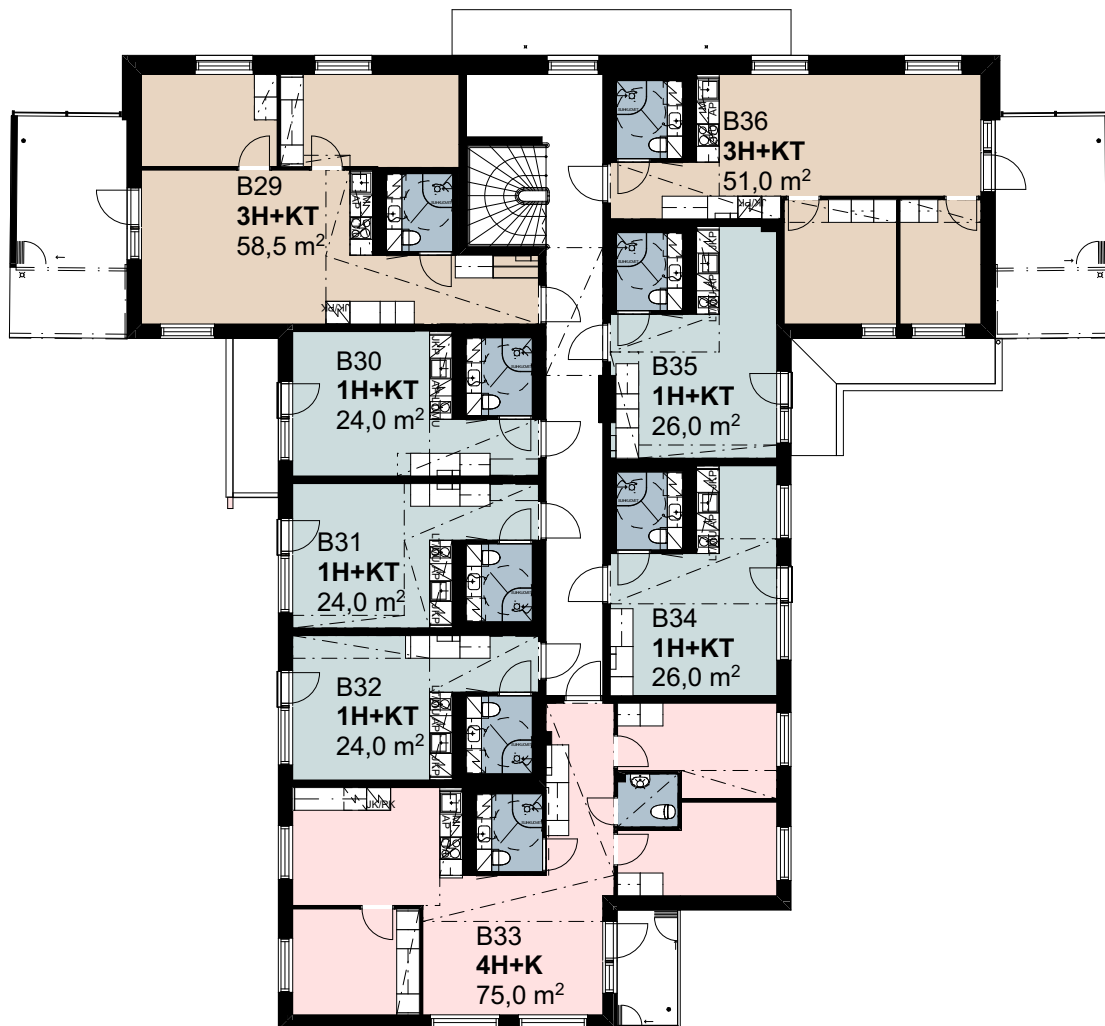
5.9.2022

Lumo



# Asunto Oy Helsingin Liikkalankuja 4 Talo B

## 2. KERROS



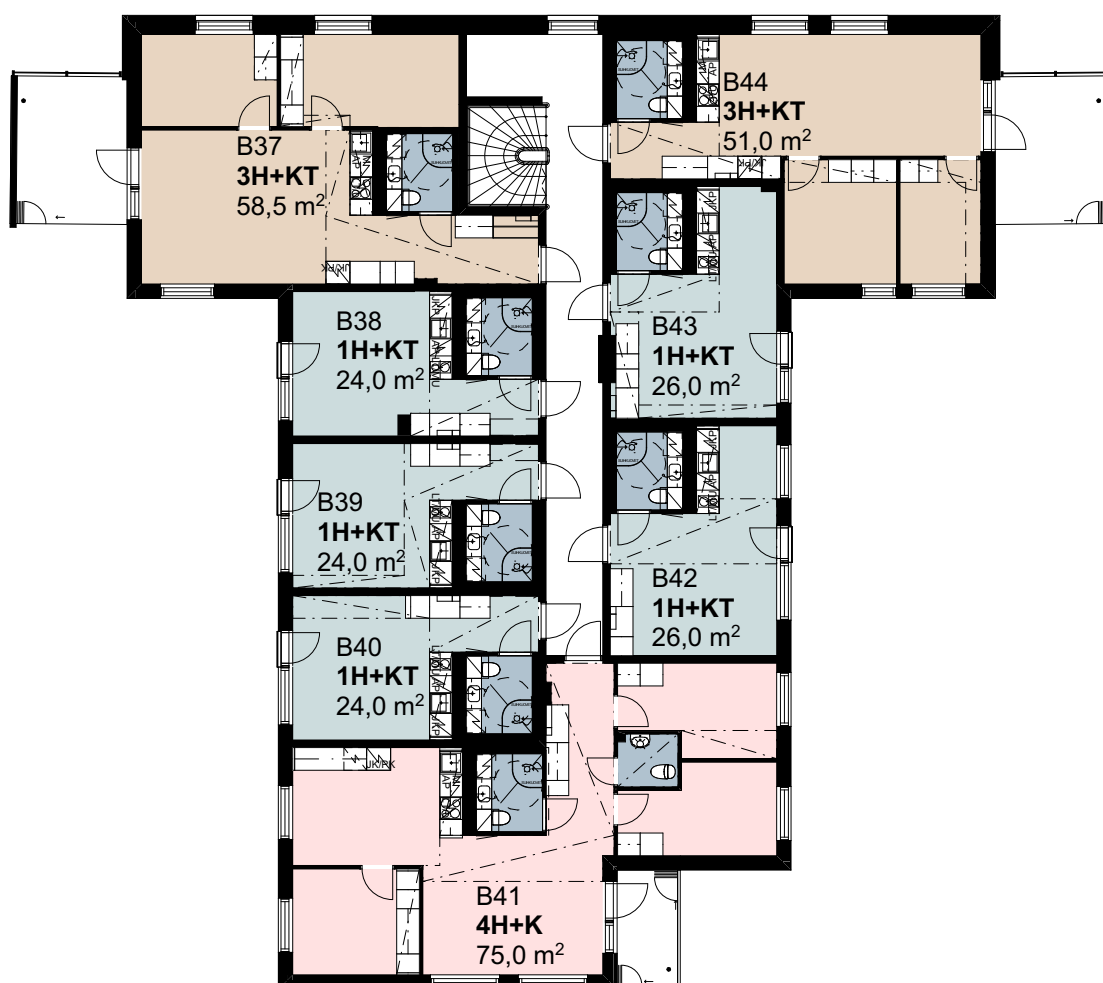
Mittakaava 1:200 10m

5.9.2022

Lumo

# Asunto Oy Helsingin Liikkalankuja 4 Talo B

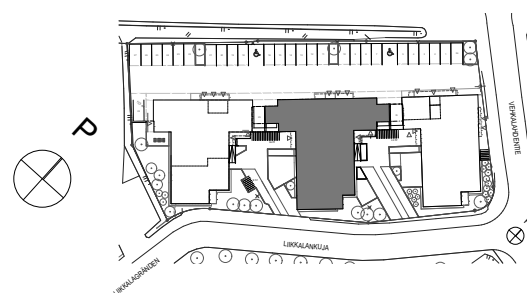
## 3. KERROS



Mittakaava 1:200 10m

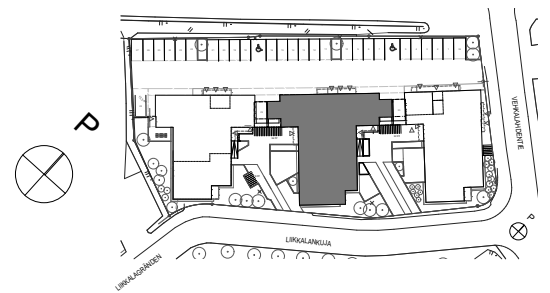
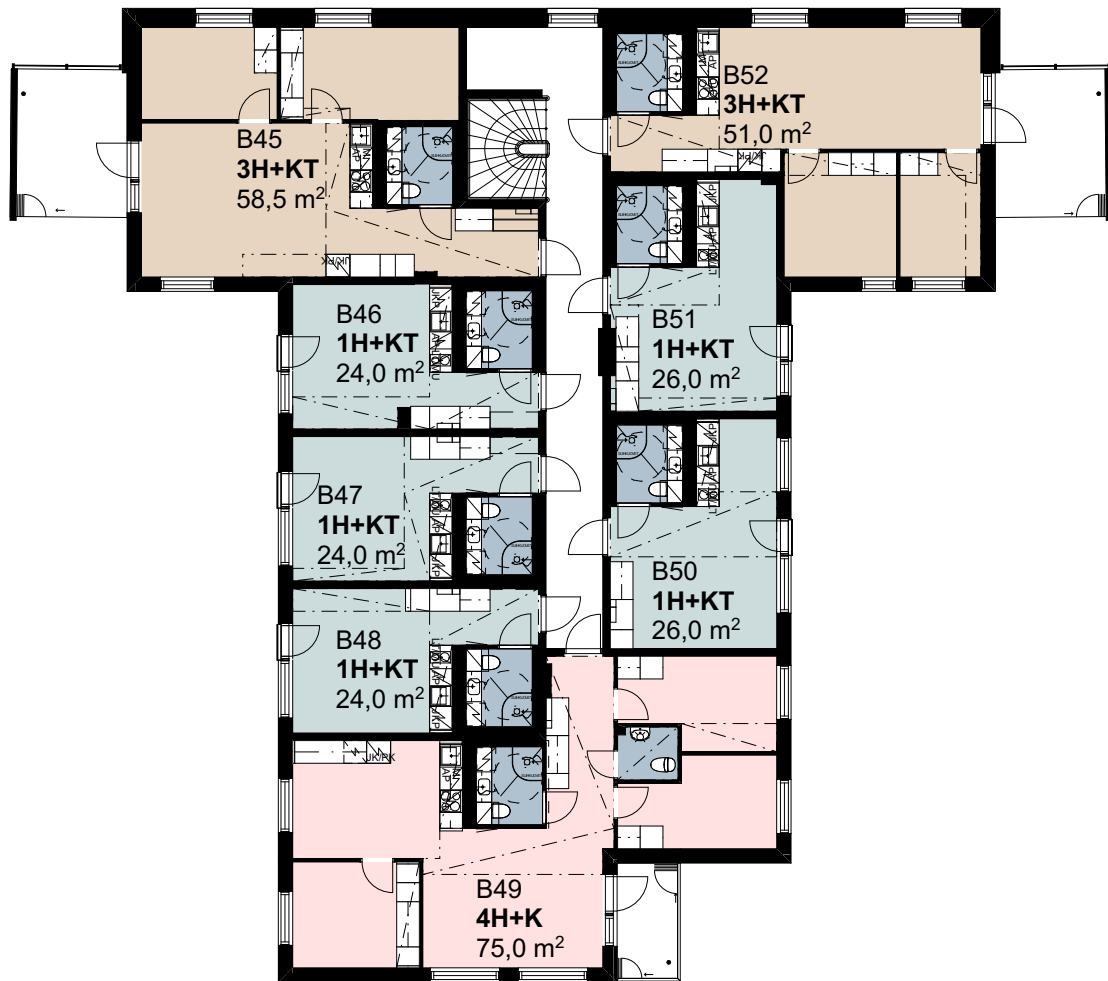
5.9.2022

Lumo



# Asunto Oy Helsingin Liikkalankuja 4 Talo B

## 4. KERROS



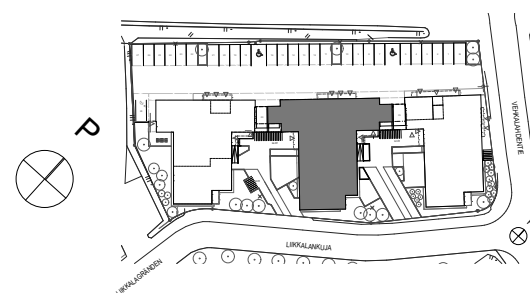
Mittakaava 1:200 10m

5.9.2022

Lumo

# Asunto Oy Helsingin Liikkalankuja 4 Talo B

## 5. KERROS



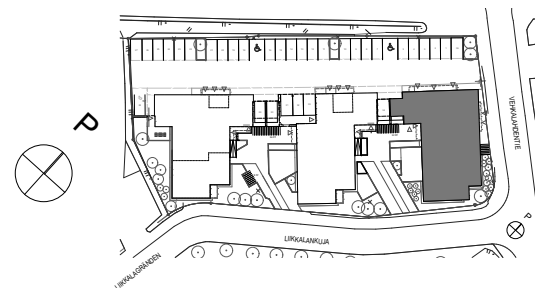
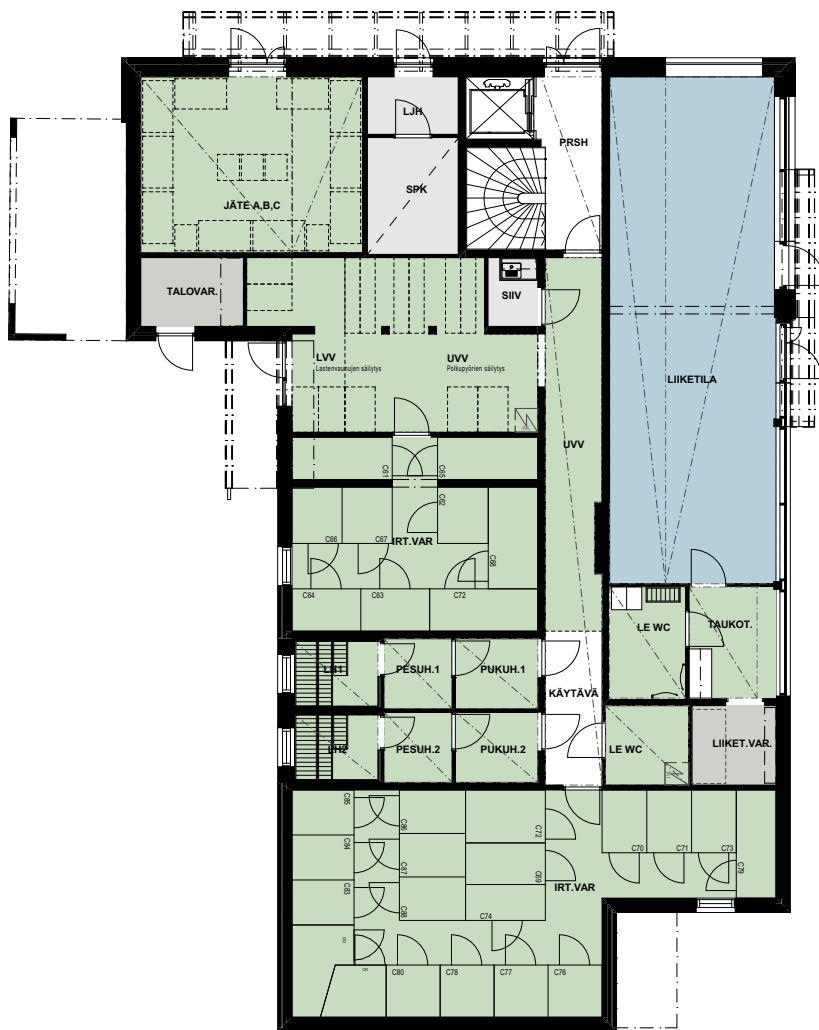
Mittakaava 1:200 10m

5.9.2022

Lumo

# Asunto Oy Helsingin Liikkalankuja 4 Talo C

## 1. KERROS



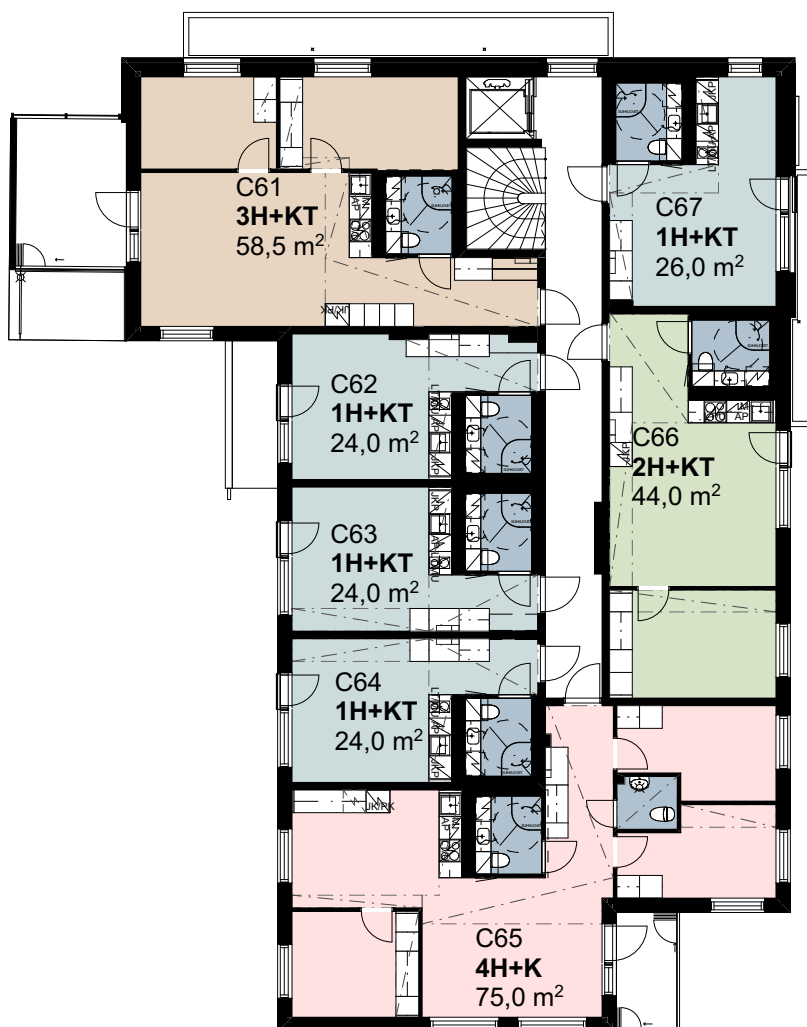
Mittakaava 1:200 10m

5.9.2022

Lumo

# Asunto Oy Helsingin Liikkalankuja 4 Talo C

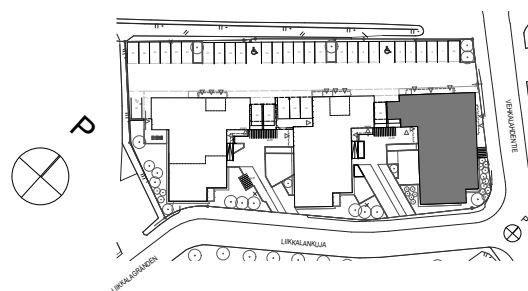
## 2. KERROS



Mittakaava 1:200 10m

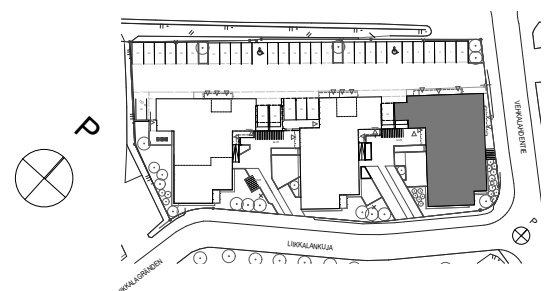
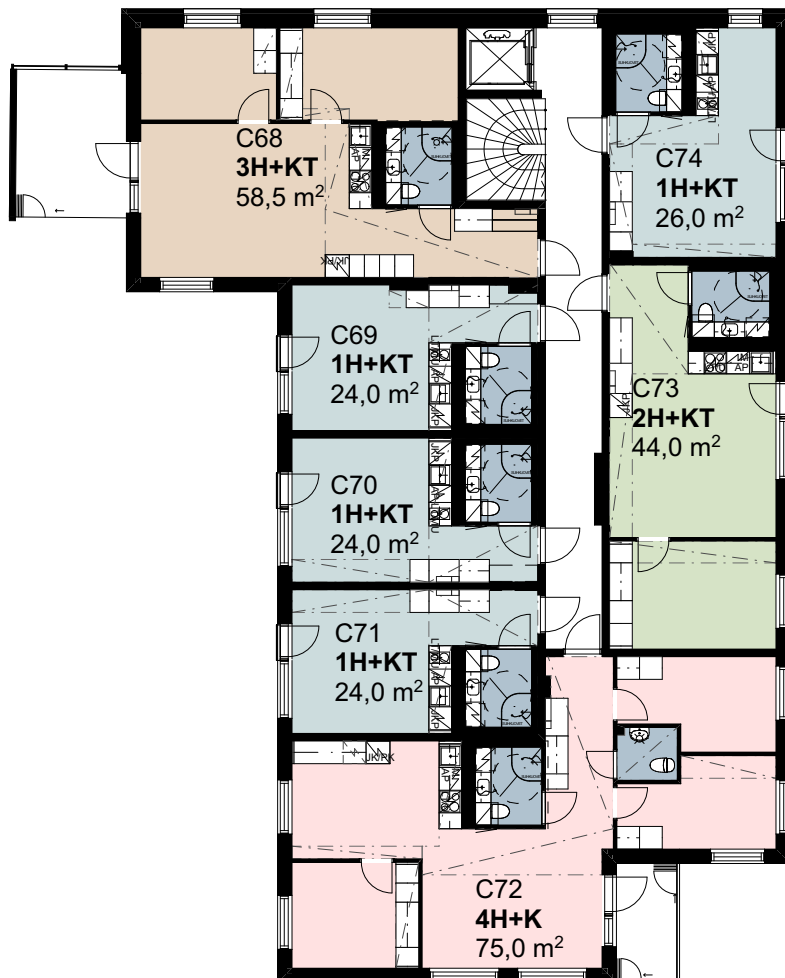
5.9.2022

Lumo



# Asunto Oy Helsingin Liikkalankuja 4 Talo C

## 3. KERROS



Mittakaava 1:200 10m

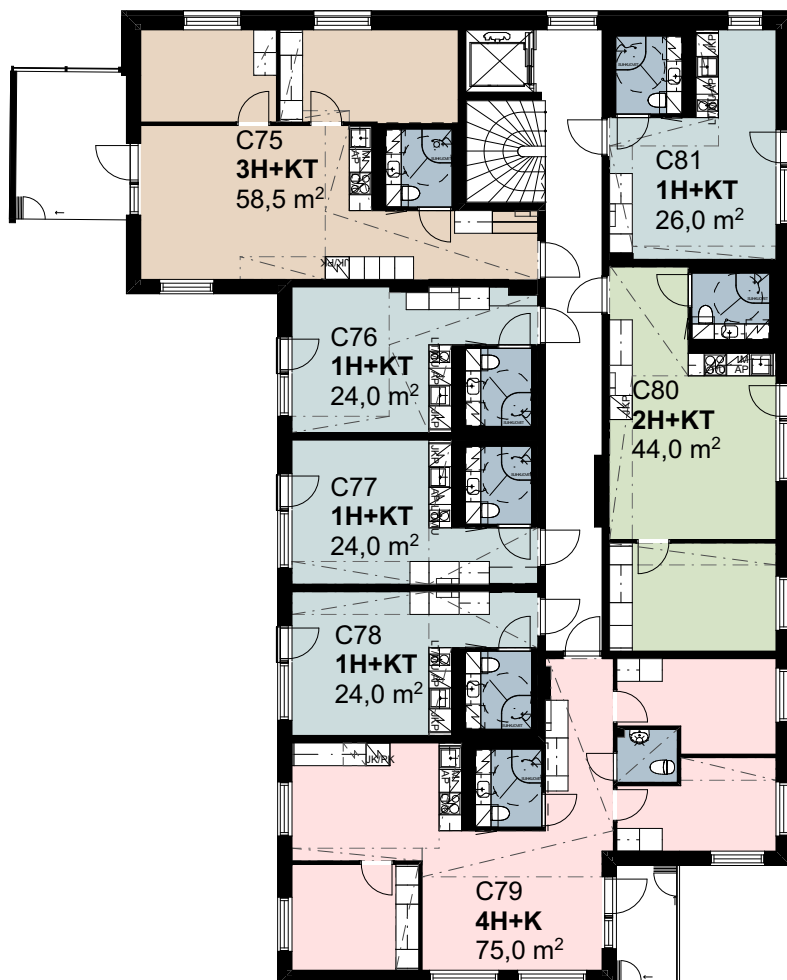
5.9.2022

Lumo



# Asunto Oy Helsingin Liikkalankuja 4 Talo C

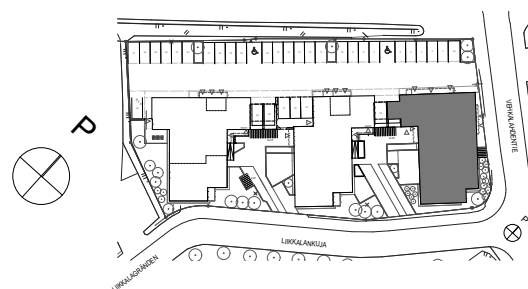
## 4. KERROS



Mittakaava 1:200 10m

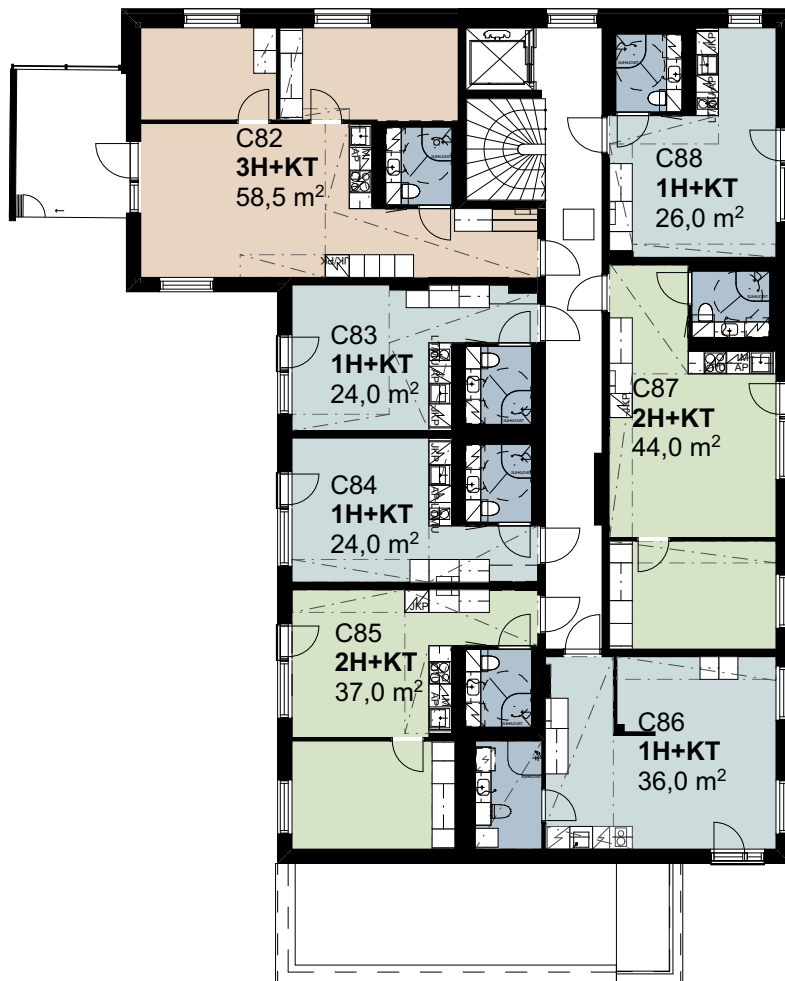
5.9.2022

Lumo



# Asunto Oy Helsingin Liikkalankuja 4 Talo C

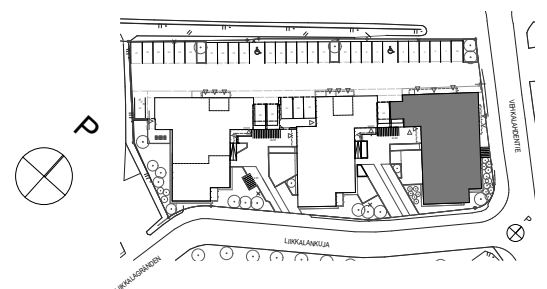
## 5. KERROS



Mittakaava 1:200 10m

5.9.2022

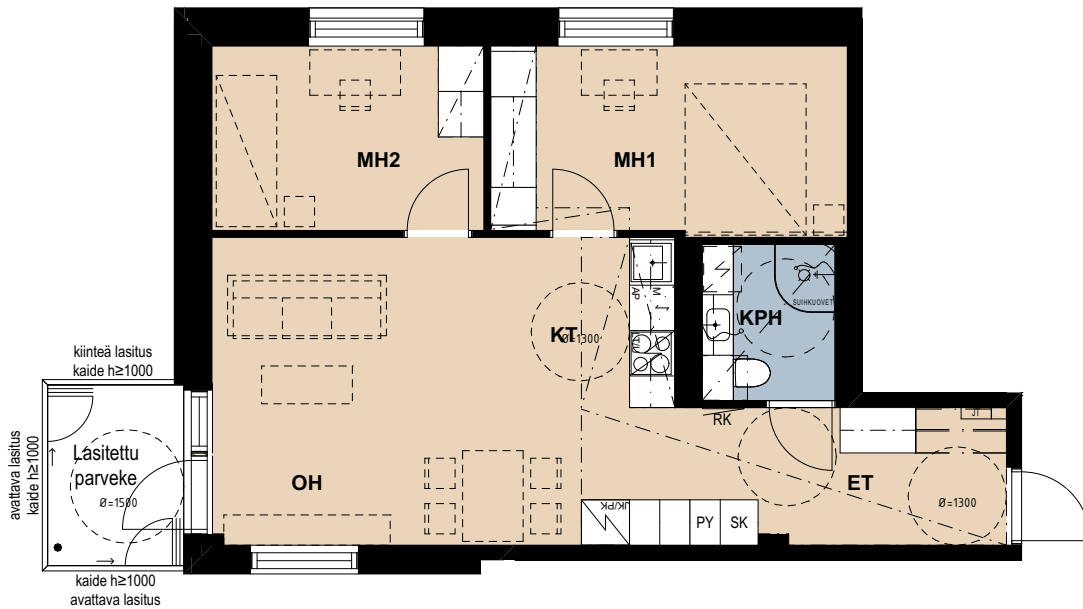
Lumo



# Asunto Oy Helsingin Liikkalankuja 4 Talo A

## 3H+KT 58,5m<sup>2</sup>

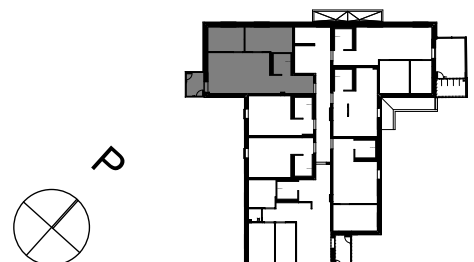
A1 2. krs



Mittakaava 1:100 5m

5.9.2022

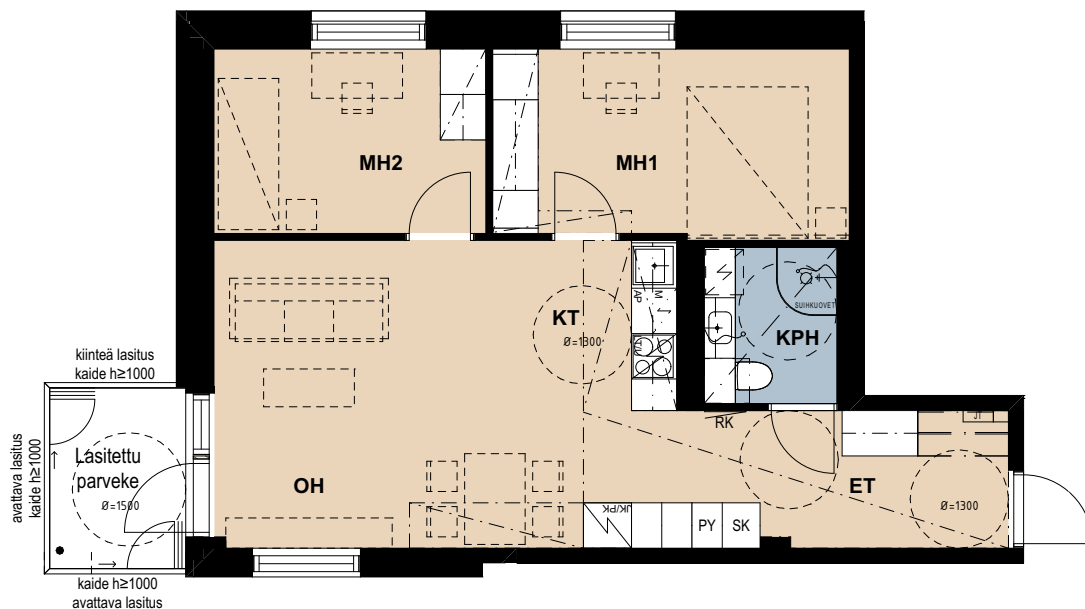
Lumo



# Asunto Oy Helsingin Liikkalankuja 4 Talo A

3H+KT 58,5m<sup>2</sup>

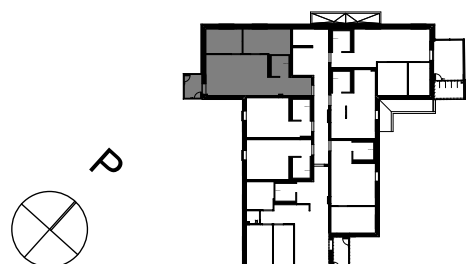
A8 3. krs  
A15 4. krs  
A22 5. krs



Mittakaava 1:100 5m

5.9.2022

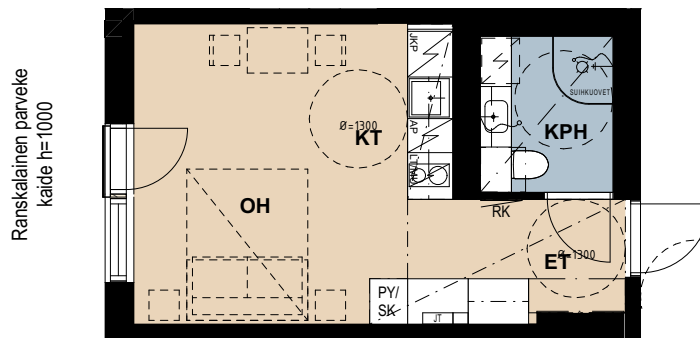
Lumo



# Asunto Oy Helsingin Liikkalankuja 4 Talo A

1H+KT 25,0 m<sup>2</sup>

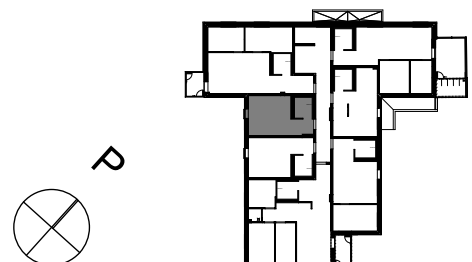
A2 2. krs



Mittakaava 1:100 5m

5.9.2022

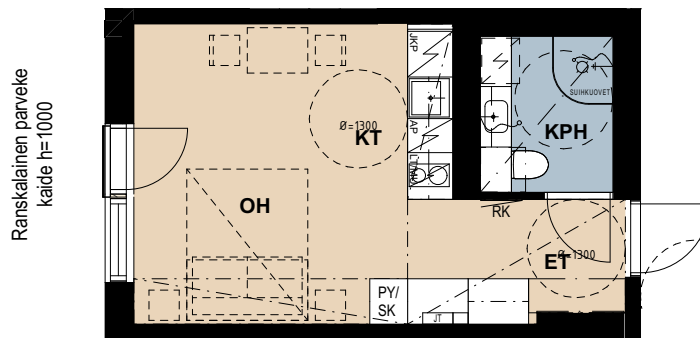
Lumo



# Asunto Oy Helsingin Liikkalankuja 4 Talo A

1H+KT 25,0 m<sup>2</sup>

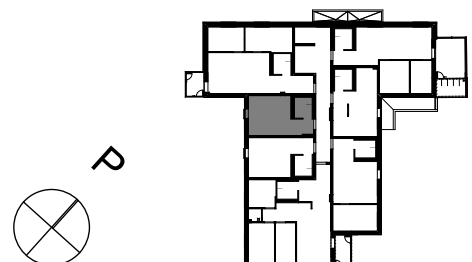
A9 3. krs  
A16 4. krs  
A23 5. krs



Mittakaava 1:100 5m

5.9.2022

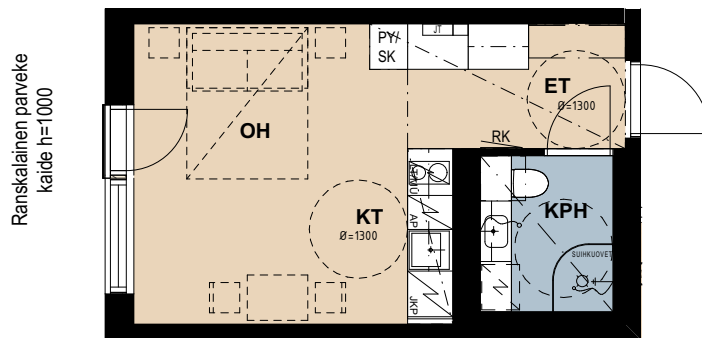
Lumo



# Asunto Oy Helsingin Liikkalankuja 4 Talo A

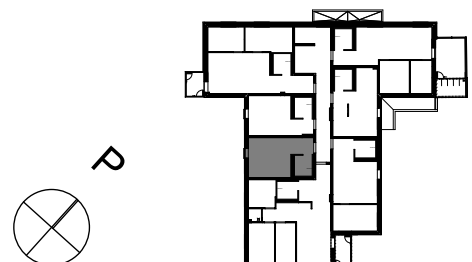
1H+KT 25,0 m<sup>2</sup>

A3 2. krs



Mittakaava 1:100  
5m  
5.9.2022

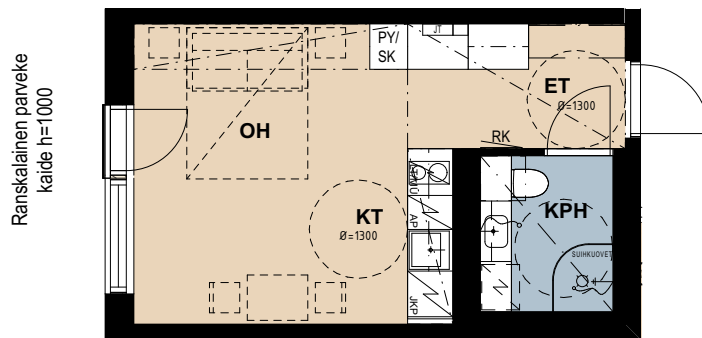
Lumo



# Asunto Oy Helsingin Liikkalankuja 4 Talo A

1H+KT 25,0 m<sup>2</sup>

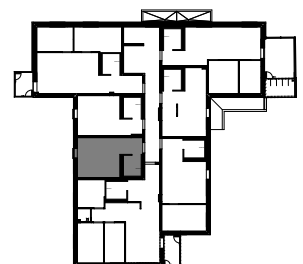
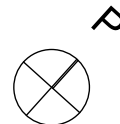
A10 3. krs  
A17 4. krs  
A24 5. krs



Mittakaava 1:100 5m

5.9.2022

Lumo





# Asunto Oy Helsingin Liikkalankuja 4 Talo A

4H+KT 69,0 m<sup>2</sup>

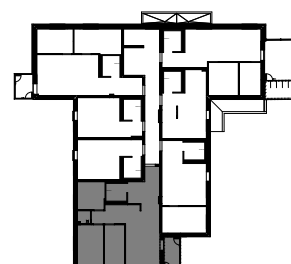
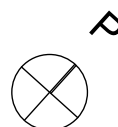
A4 2. krs  
A11 3. krs



Mittakaava 1:100 5m

5.9.2022

Lumo



# Asunto Oy Helsingin Liikkalankuja 4 Talo A

4H+KT 68,5 m<sup>2</sup>

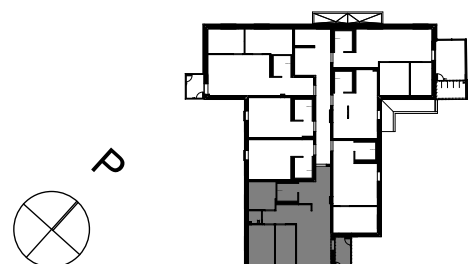
A18 4. krs



Mittakaava 1:100 5m

5.9.2022

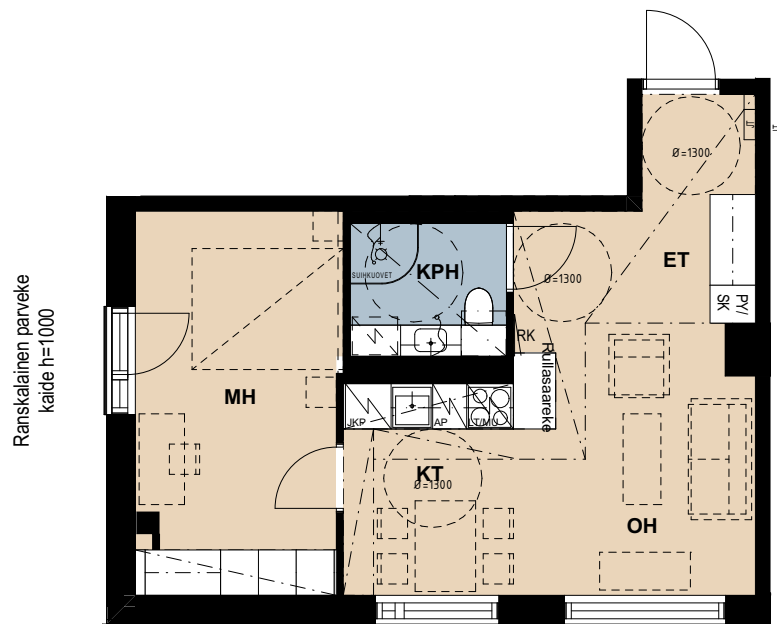
Lumo



# Asunto Oy Helsingin Liikkalankuja 4 Talo A

2H+KT 43,0 m<sup>2</sup>

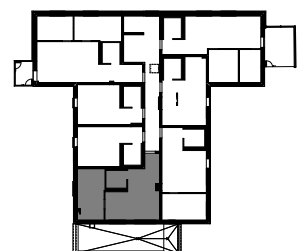
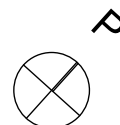
A25 5. krs



Mittakaava 1:100 5m

5.9.2022

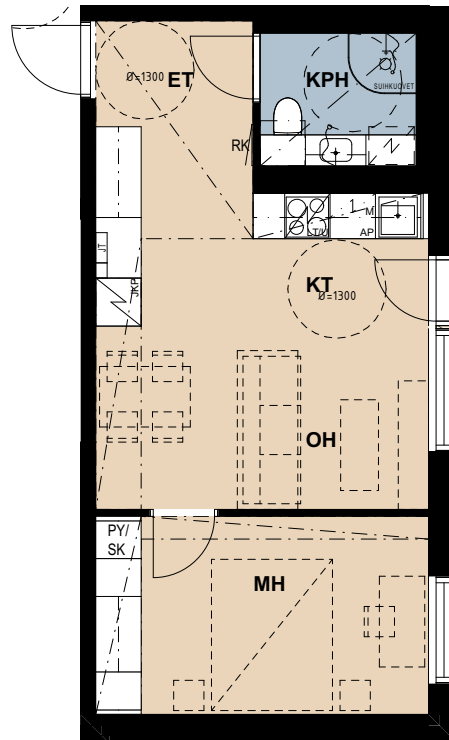
Lumo



# Asunto Oy Helsingin Liikkalankuja 4 Talo A

2H+KT 39,5 m<sup>2</sup>

A5 2. krs  
A12 3. krs  
A19 4. krs

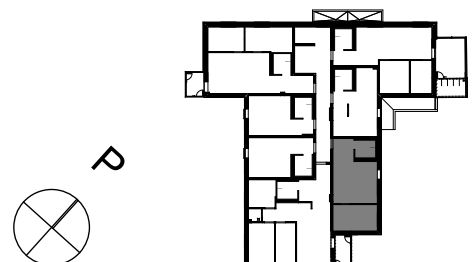


Ranskalainen parveke  
kaide h=1000

Mittakaava 1:100 5m

5.9.2022

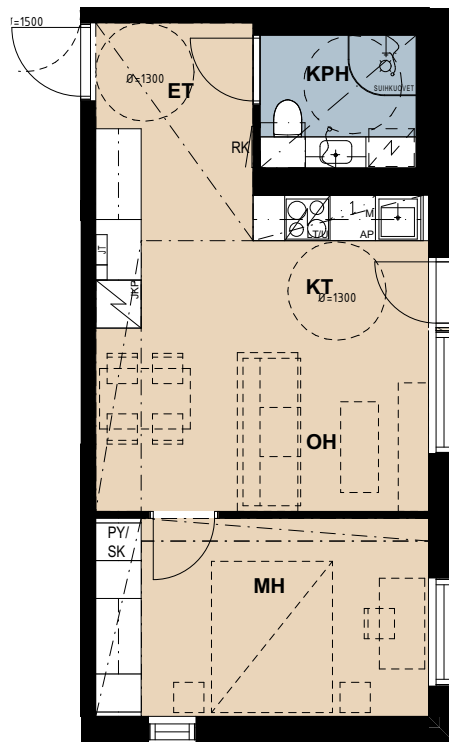
Lumo



# Asunto Oy Helsingin Liikkalankuja 4 Talo A

2H+KT 39,5 m<sup>2</sup>

A26 5. krs

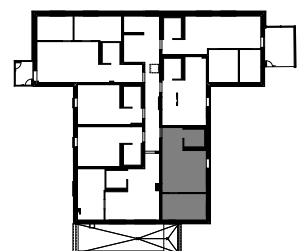
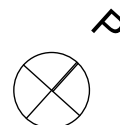


Ranskalainen parveke  
kaide h=1000

Mittakaava 1:100 5m

5.9.2022

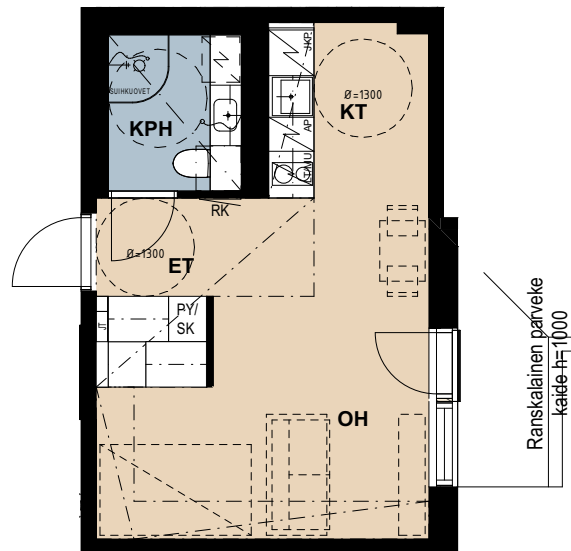
Lumo



# Asunto Oy Helsingin Liikkalankuja 4 Talo A

1H+KT 29,0 m<sup>2</sup>

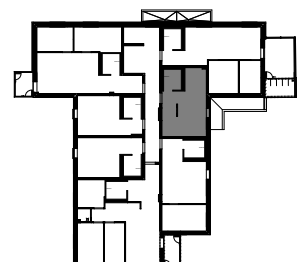
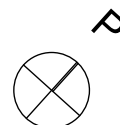
A6 2. krs  
A13 3. krs  
A20 4. krs  
A27 5. krs



Mittakaava 1:100 5m

5.9.2022

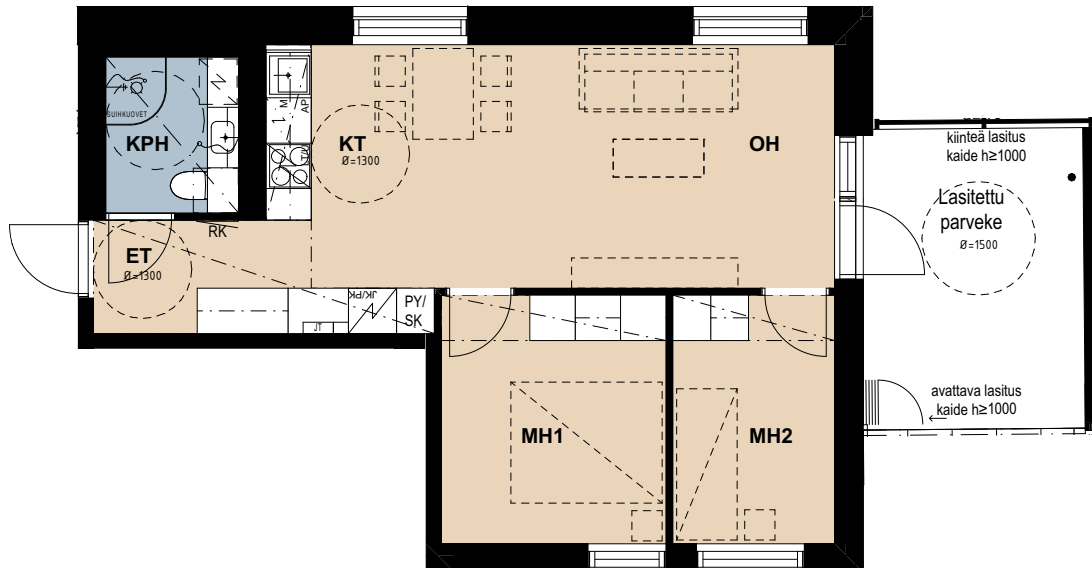
Lumo



# Asunto Oy Helsingin Liikkalankuja 4 Talo A

3H+KT 51,0 m<sup>2</sup>

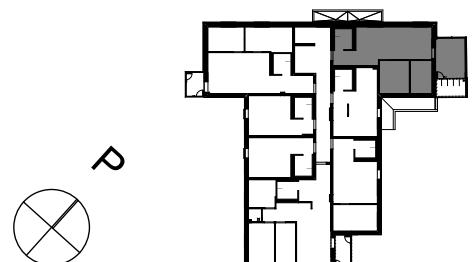
A7 2. krs



Mittakaava 1:100 5m

5.9.2022

Lumo

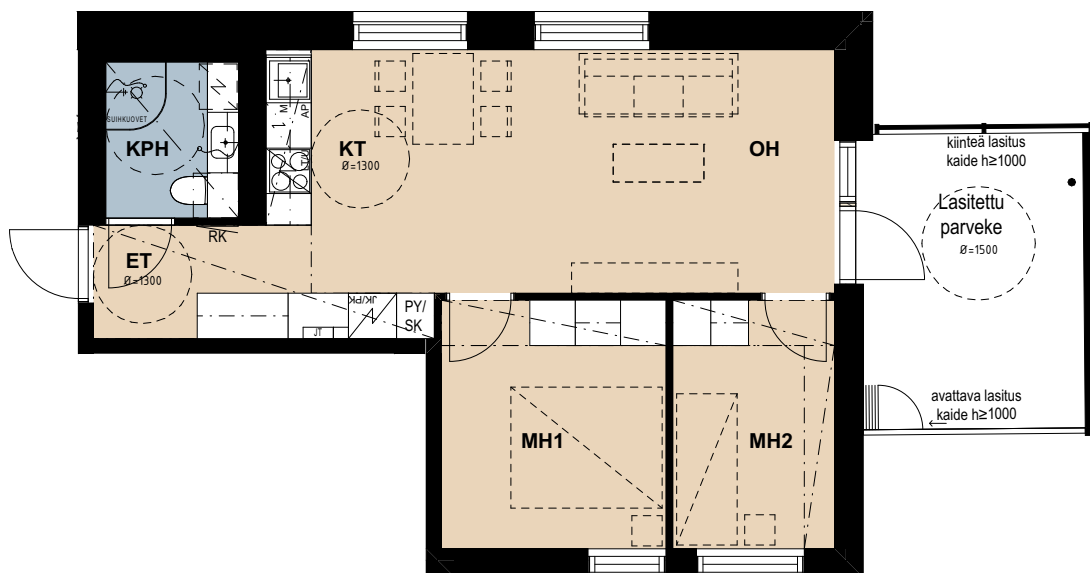


# Asunto Oy Helsingin Liikkalankuja 4 Talo A

3H+KT 51,0 m<sup>2</sup>

A14 3. krs

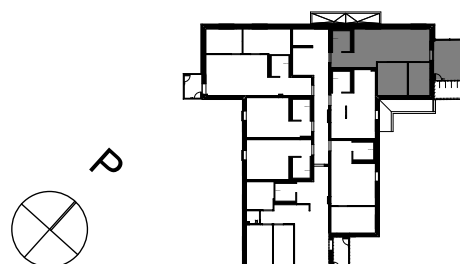
A28 5. krs



Mittakaava 1:100 5m

5.9.2022

Lumo

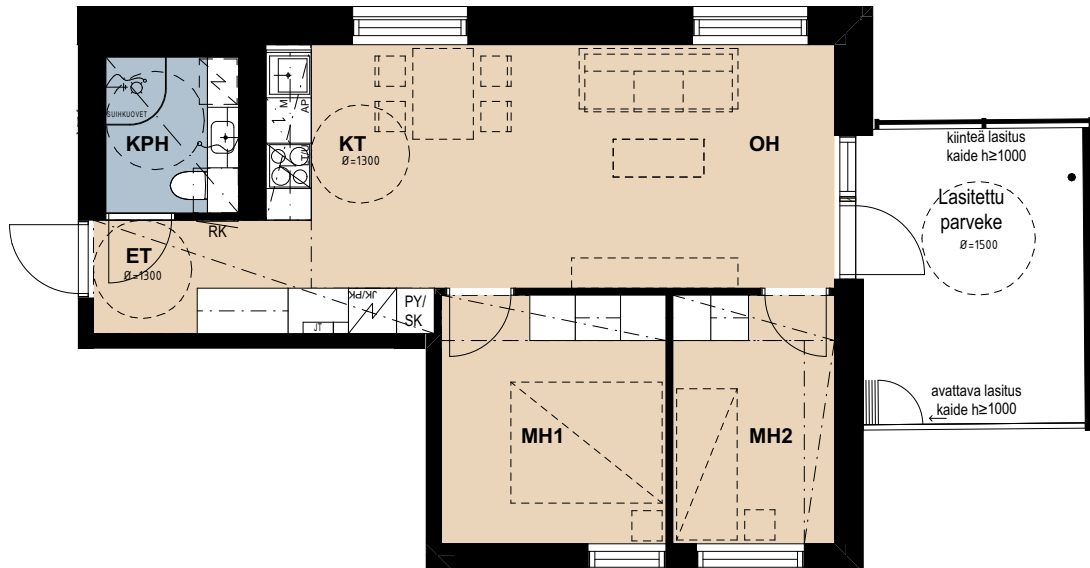




# Asunto Oy Helsingin Liikkalankuja 4 Talo A

3H+KT 51,0 m<sup>2</sup>

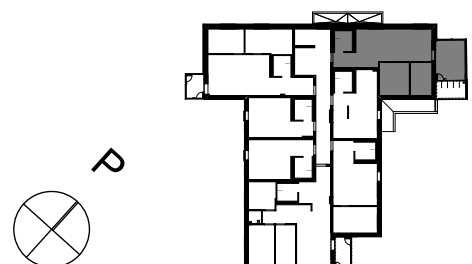
A21 4. krs



Mittakaava 1:100 5m

5.9.2022

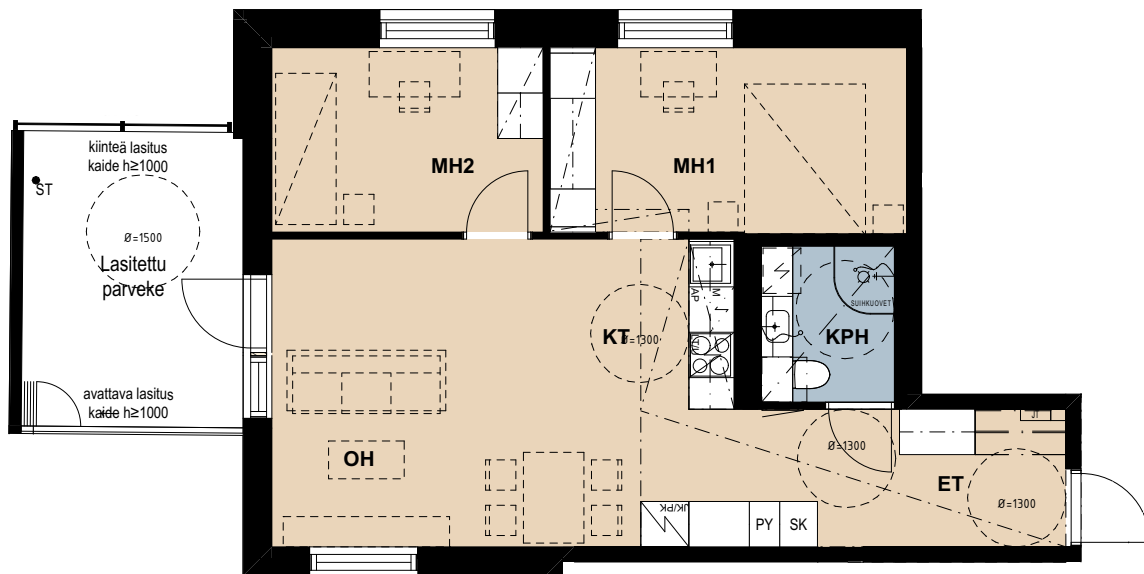
Lumo



# Asunto Oy Helsingin Liikkalankuja 4 Talo B

3H+KT 58,5 m<sup>2</sup>

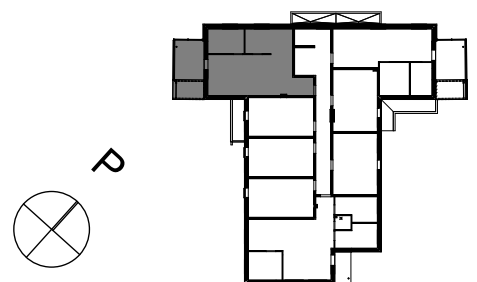
B29 2. krs



Mittakaava 1:100 5m

5.9.2022

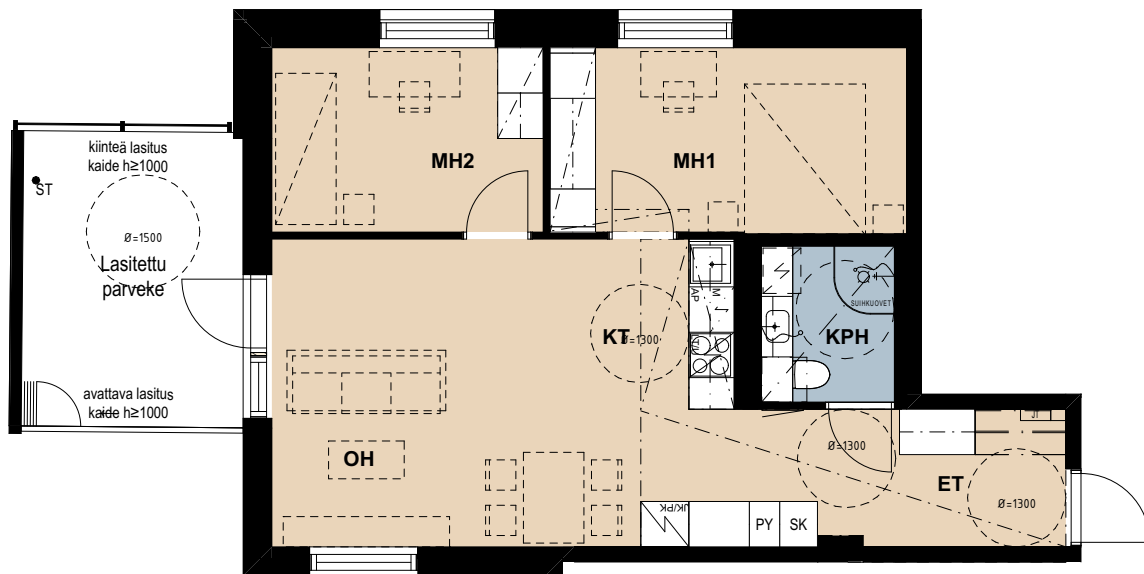
Lumo



# Asunto Oy Helsingin Liikkalankuja 4 Talo B

## 3H+KT 58,5 m<sup>2</sup>

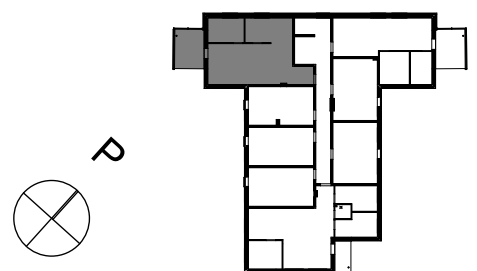
B37 3. krs



Mittakaava 1:100 5m

5.9.2022

Lumo

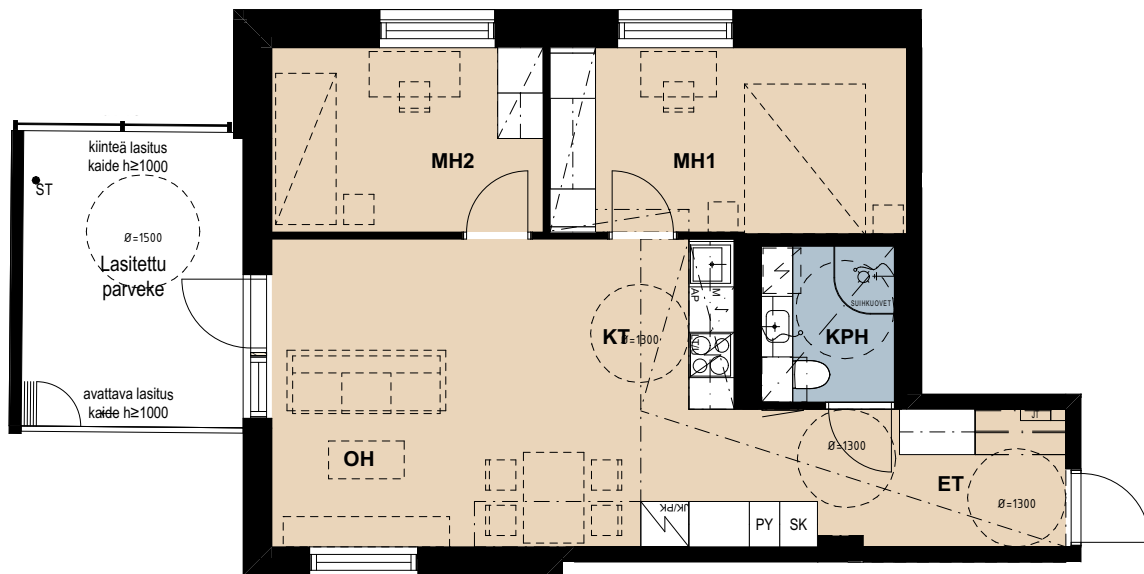


# Asunto Oy Helsingin Liikkalankuja 4 Talo B

3H+KT 58,5 m<sup>2</sup>

B45 4. krs

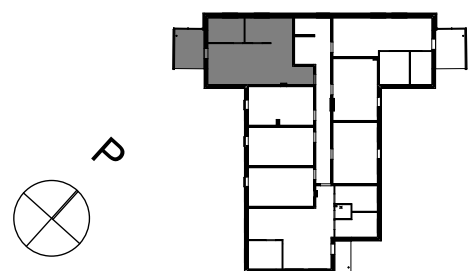
B53 5. krs



Mittakaava 1:100 5m

5.9.2022

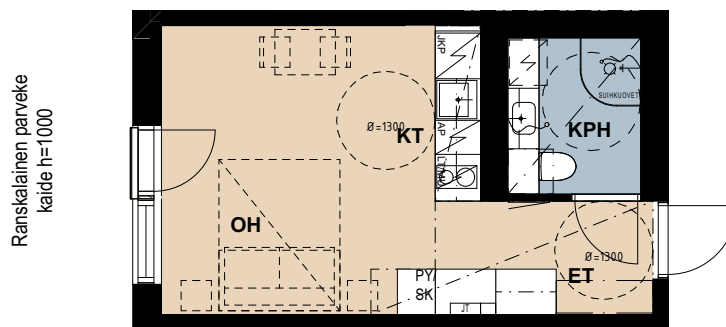
Lumo



# Asunto Oy Helsingin Liikkalankuja 4 Talo B

1H+KT 24,0 m<sup>2</sup>

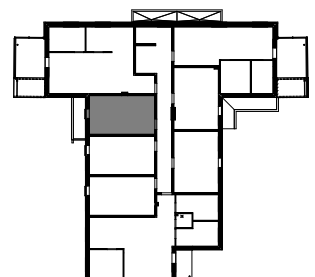
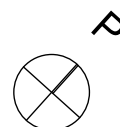
B30 2. krs



Mittakaava 1:100 5m

5.9.2022

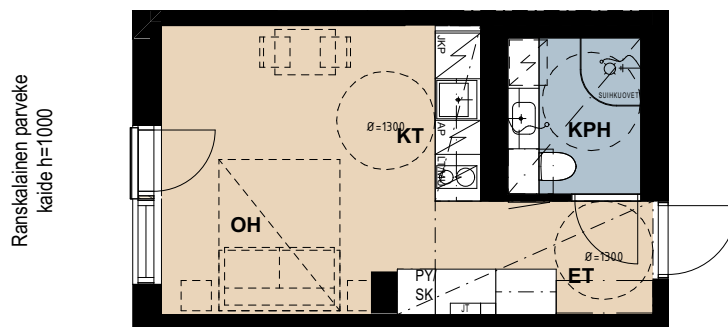
Lumo



# Asunto Oy Helsingin Liikkalankuja 4 Talo B

1H+KT 24,0 m<sup>2</sup>

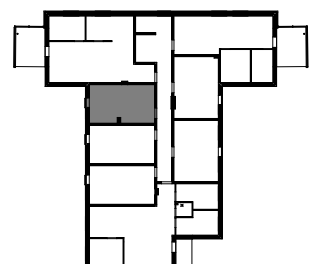
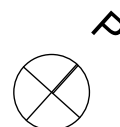
B38 3. krs



Mittakaava 1:100 5m

5.9.2022

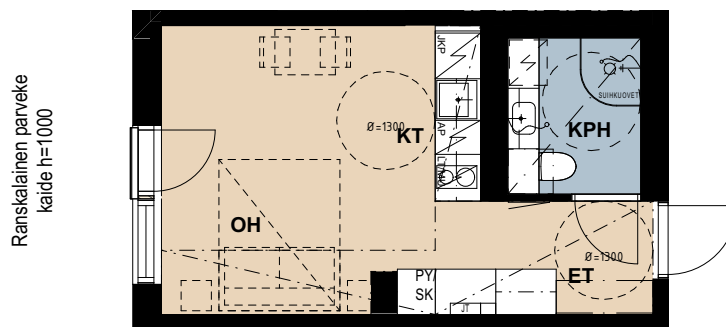
Lumo



# Asunto Oy Helsingin Liikkalankuja 4 Talo B

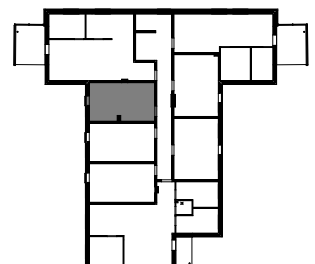
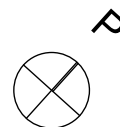
1H+KT 24,0 m<sup>2</sup>

B46 4. krs  
B54 5. krs



Mittakaava 1:100  
5m  
5.9.2022

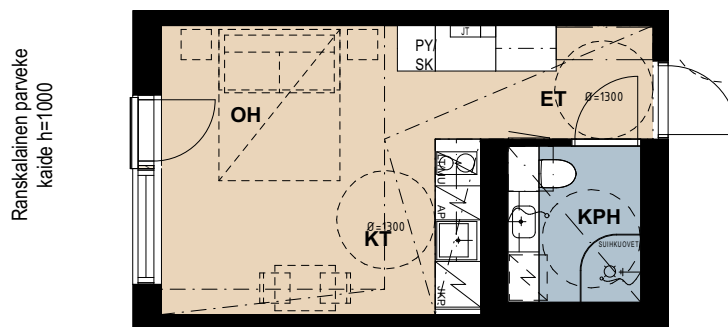
Lumo



# Asunto Oy Helsingin Liikkalankuja 4 Talo B

1H+KT 24,0 m<sup>2</sup>

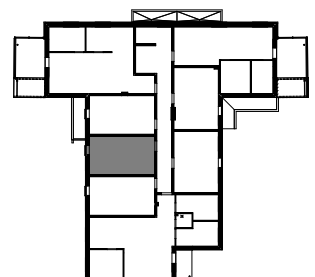
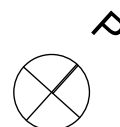
B31 2. krs  
B39 3. krs  
B47 4. krs  
B55 5. krs



Mittakaava 1:100 5m

5.9.2022

Lumo

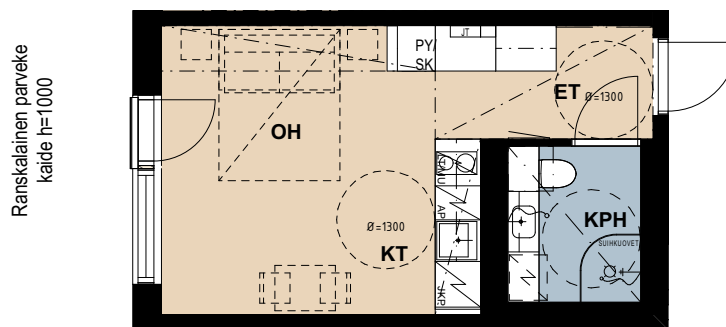




# Asunto Oy Helsingin Liikkalankuja 4 Talo B

1H+KT 24,0 m<sup>2</sup>

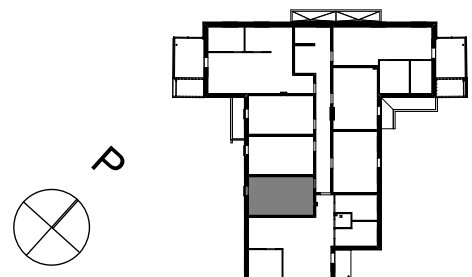
B32 2. krs  
B40 3. krs  
B48 4. krs



Mittakaava 1:100 5m

5.9.2022

Lumo



# Asunto Oy Helsingin Liikkalankuja 4 Talo B

2H+KT 37,0 m<sup>2</sup>

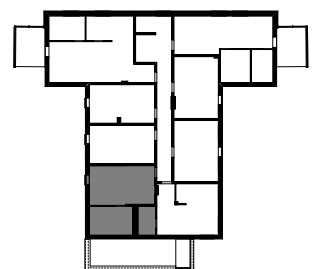
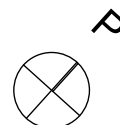
B56 5. krs



Mittakaava 1:100 5m

5.9.2022

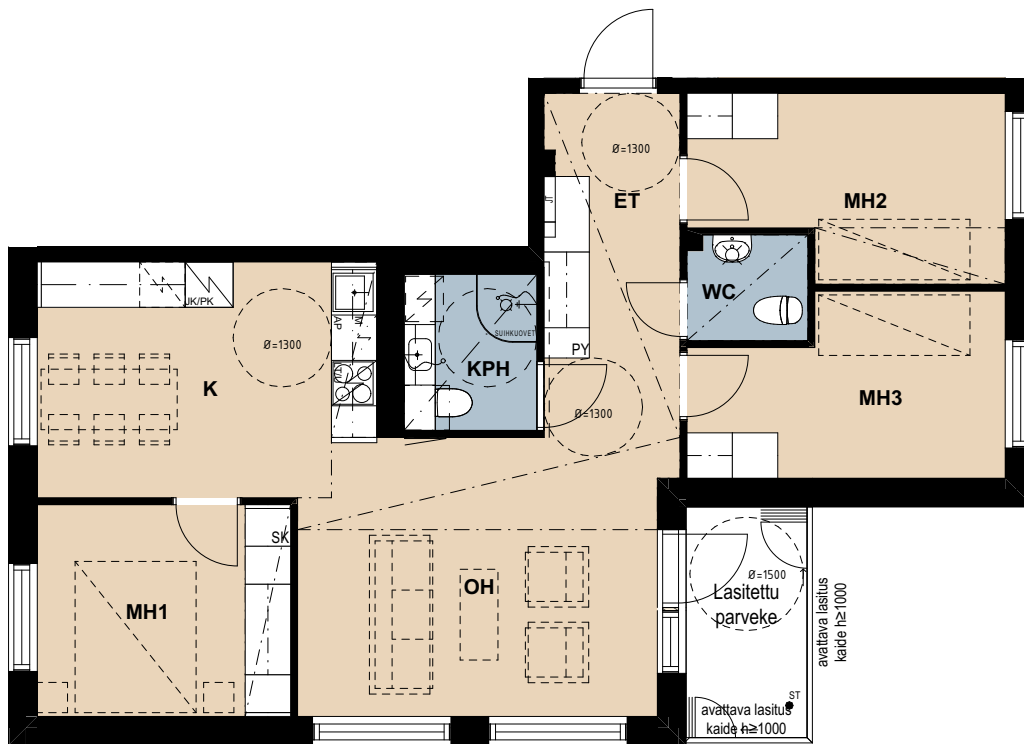
Lumo



# Asunto Oy Helsingin Liikkalankuja 4 Talo B

4H+K 75,0 m<sup>2</sup>

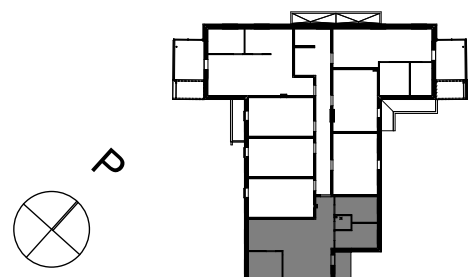
B33 2. krs



Mittakaava 1:100 5m

5.9.2022

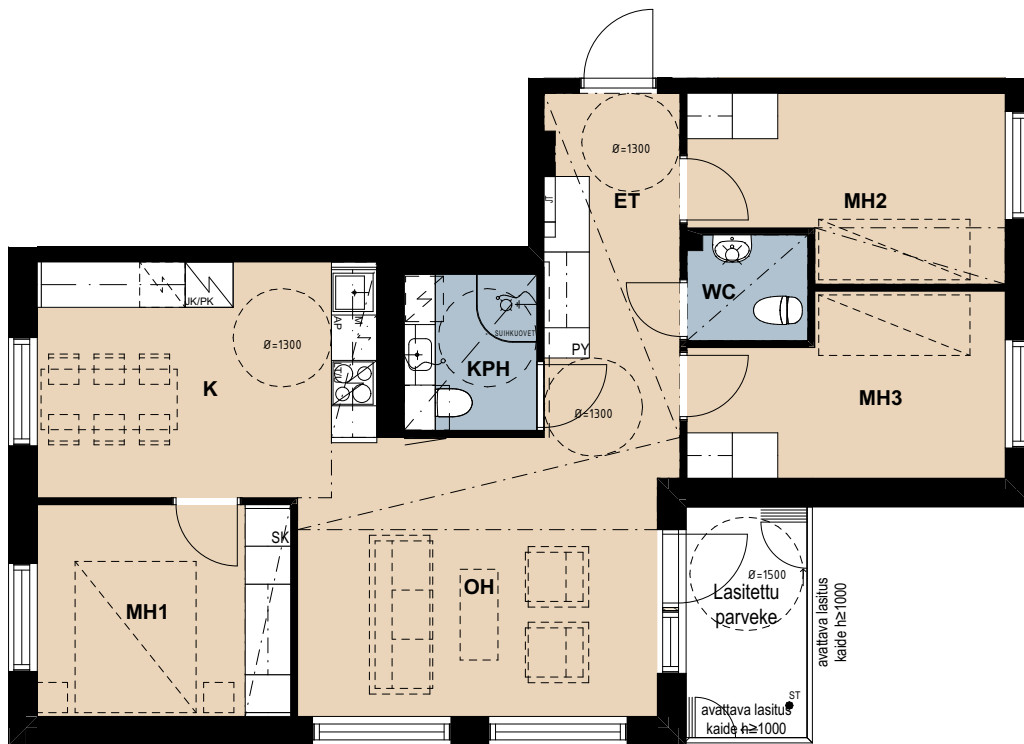
Lumo



# Asunto Oy Helsingin Liikkalankuja 4 Talo B

4H+K 75,0 m<sup>2</sup>

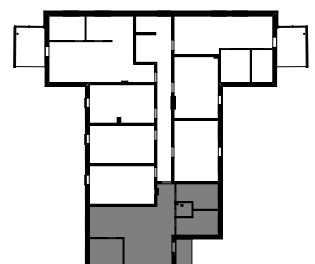
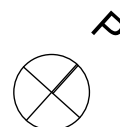
B41 3. krs



Mittakaava 1:100 5m

5.9.2022

Lumo



# Asunto Oy Helsingin Liikkalankuja 4 Talo B

4H+K 75,0 m<sup>2</sup>

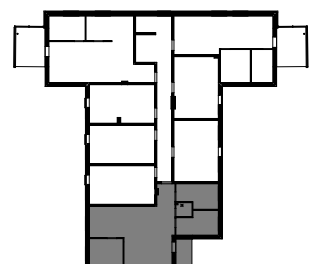
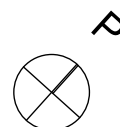
B49 4. krs



Mittakaava 1:100 5m

5.9.2022

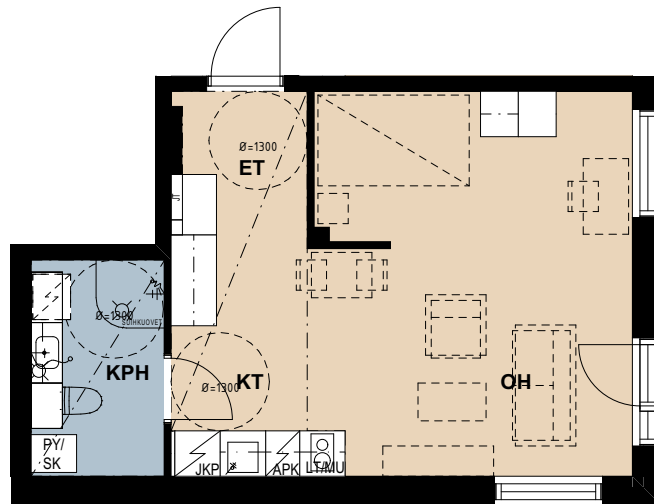
Lumo



# Asunto Oy Helsingin Liikkalankuja 4 Talo B

1H+KT 36,0 m<sup>2</sup>

B57 5. krs

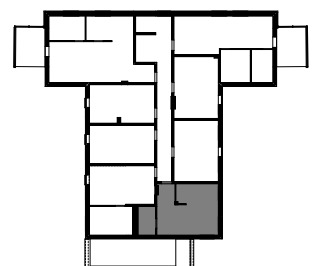
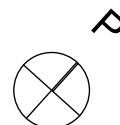


Ranskalainen parveke  
katte h=1000

Mittakaava 1:100 5m

5.9.2022

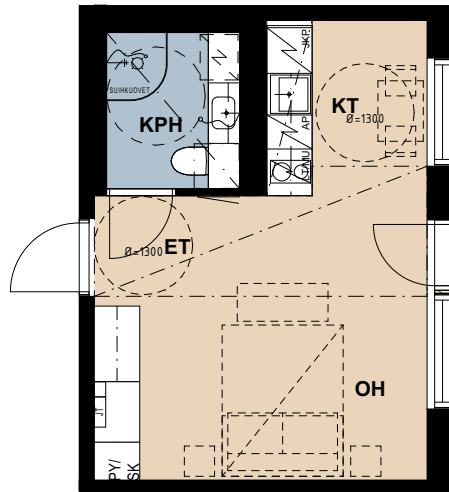
Lumo



# Asunto Oy Helsingin Liikkalankuja 4 Talo B

1H+KT 26,0 m<sup>2</sup>

B34 2. krs  
B42 3. krs  
B50 4. krs  
B58 5. krs

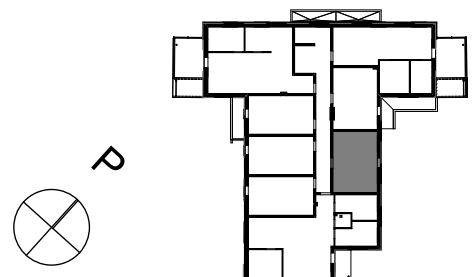


Ranskalainen parveke  
kaide h=1000

Mittakaava 1:100 5m

5.9.2022

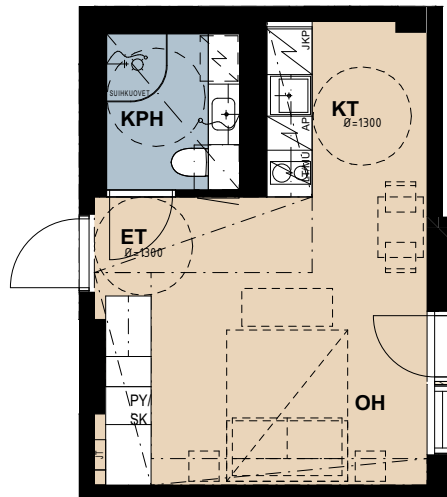
Lumo



# Asunto Oy Helsingin Liikkalankuja 4 Talo B

1H+KT 26,0 m<sup>2</sup>

B35 2. krs  
B43 3. krs  
B51 4. krs  
B59 5. krs

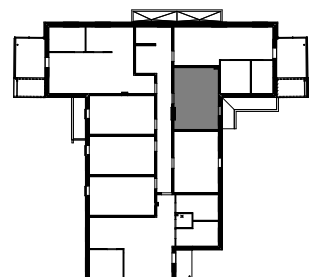
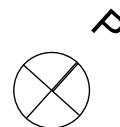


Ranskalainen parveke  
kaide h=1000

Mittakaava 1:100 5m

5.9.2022

Lumo

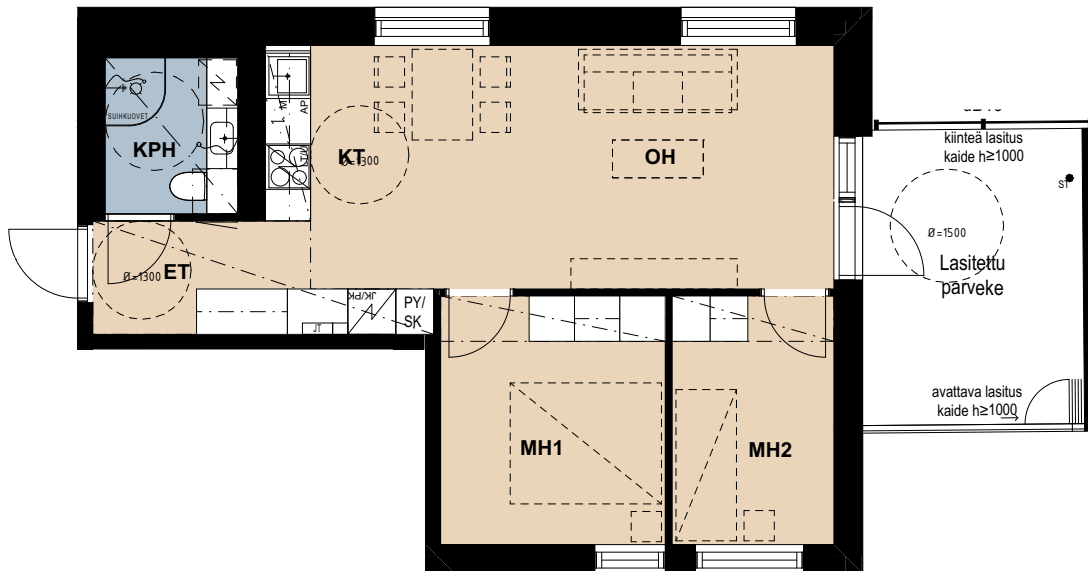




# Asunto Oy Helsingin Liikkalankuja 4 Talo B

3H+KT 51,0 m<sup>2</sup>

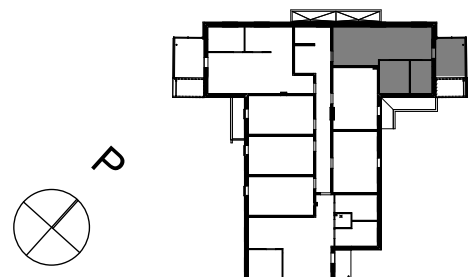
B36 2. krs



Mittakaava 1:100 5m

5.9.2022

Lumo

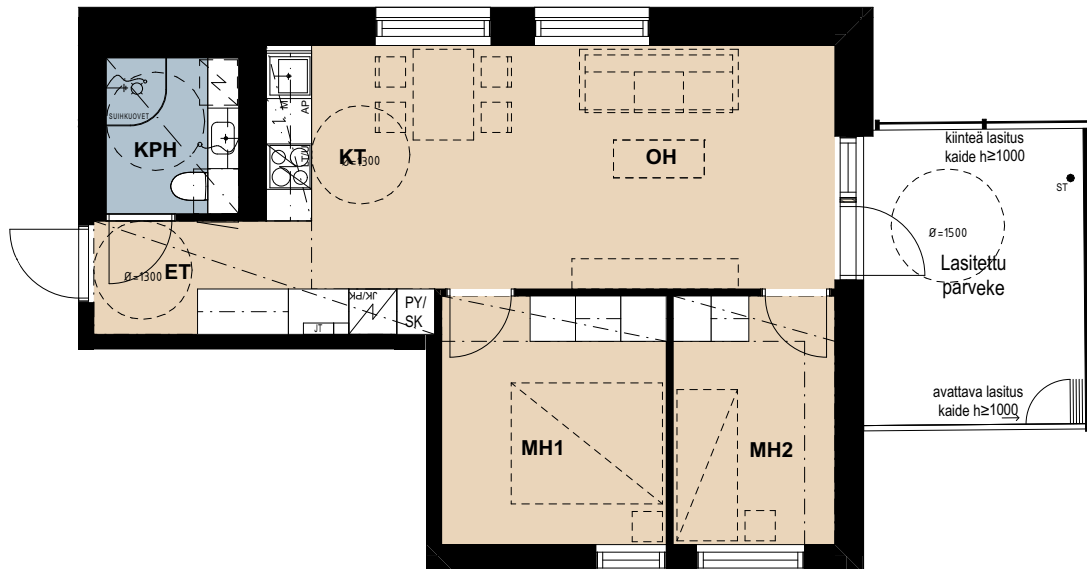


# Asunto Oy Helsingin Liikkalankuja 4 Talo B

3H+KT 51,0 m<sup>2</sup>

B44 3. krs

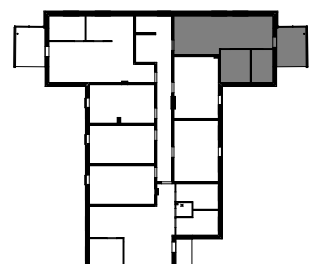
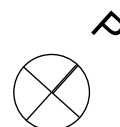
B60 5. krs



Mittakaava 1:100 5m

5.9.2022

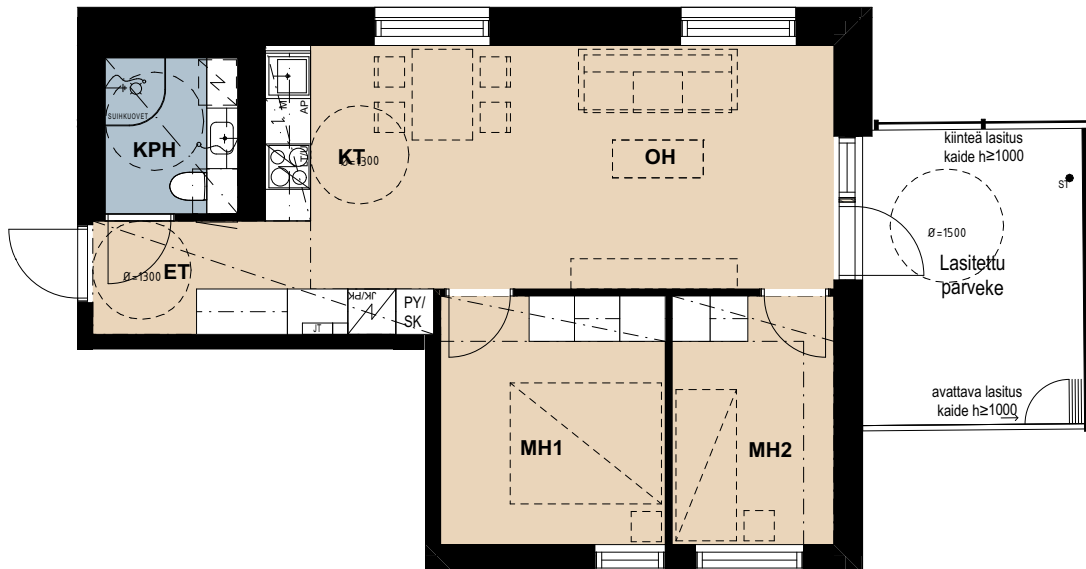
Lumo



# Asunto Oy Helsingin Liikkalankuja 4 Talo B

3H+KT 51,0 m<sup>2</sup>

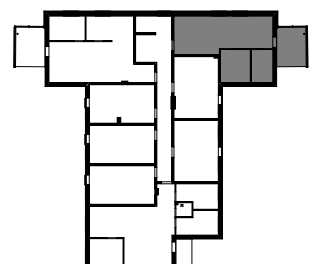
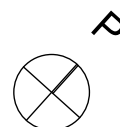
B52 4. krs



Mittakaava 1:100 5m

5.9.2022

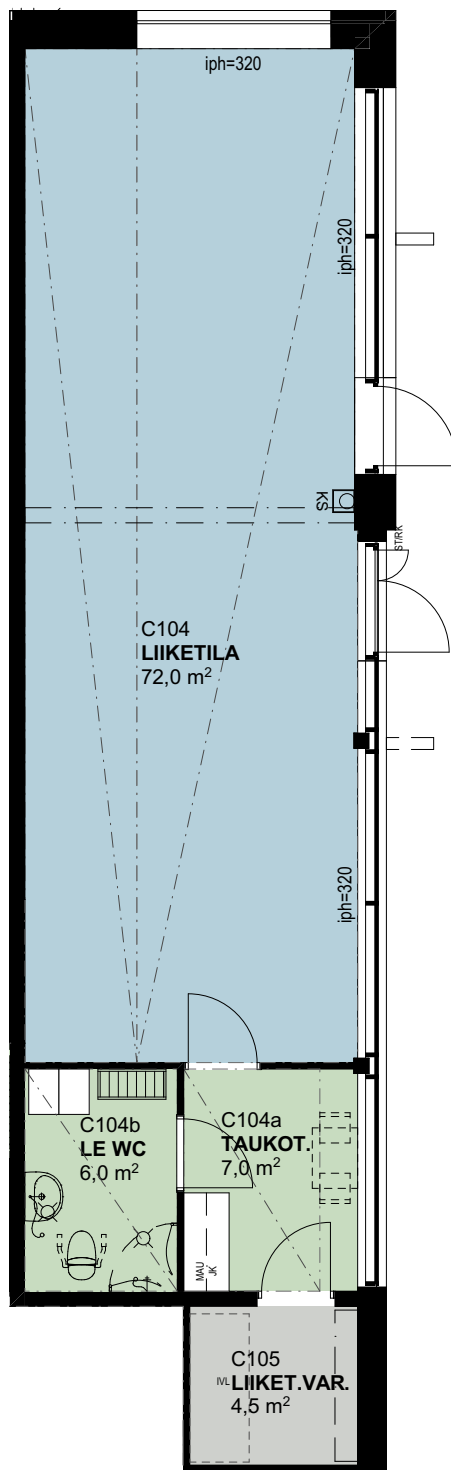
Lumo



# Asunto Oy Helsingin Liikkalankuja 4 Talo C

## LIIKETILA

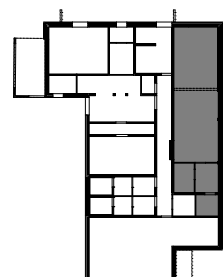
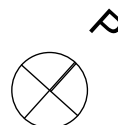
C104 1. krs



Mittakaava 1:100 5m

17.10.2022

Lumo

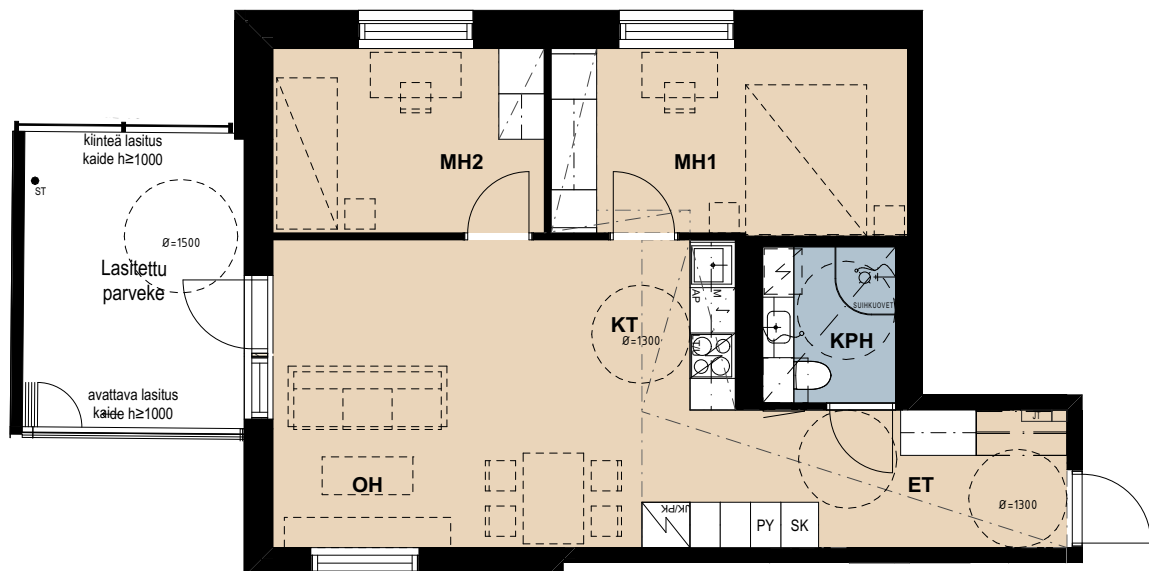


# Asunto Oy Helsingin Liikkalankuja 4 Talo C

3H+KT 58,5 m<sup>2</sup>

C61 2. krs

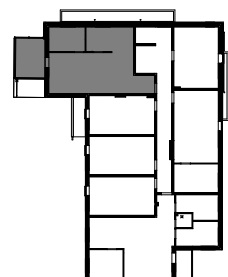
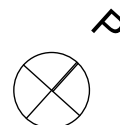
C68 3. krs



Mittakaava 1:100 5m

7.10.2022

Lumo

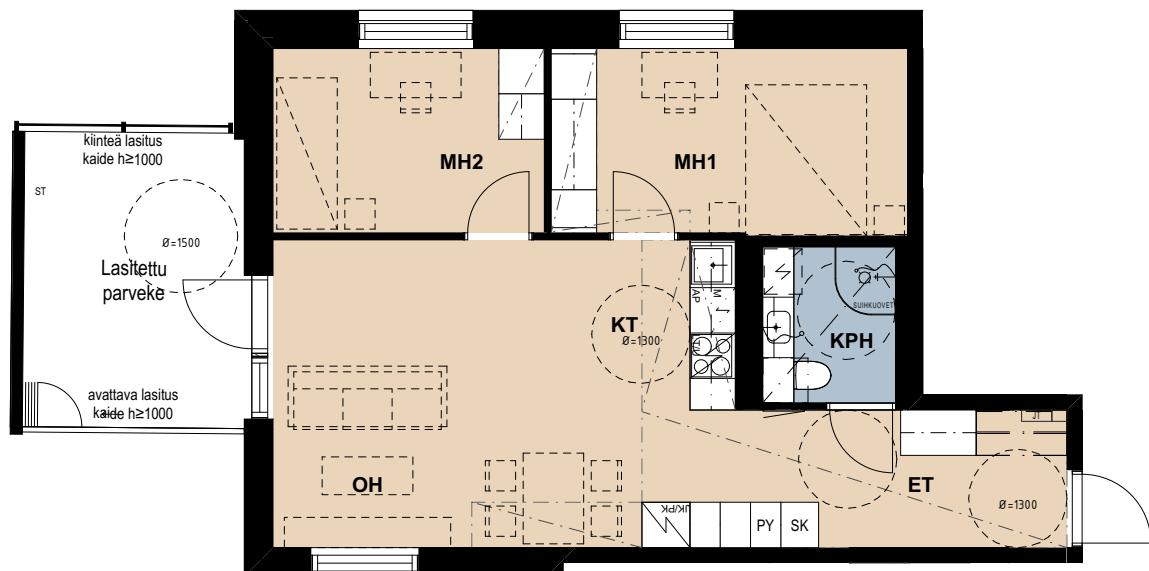


# Asunto Oy Helsingin Liikkalankuja 4 Talo C

3H+KT 58,5 m<sup>2</sup>

C75 4. krs

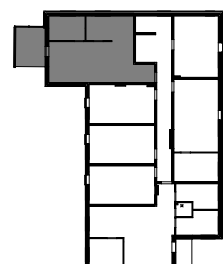
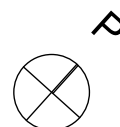
C82 5. krs



Mittakaava 1:100 5m

7.10.2022

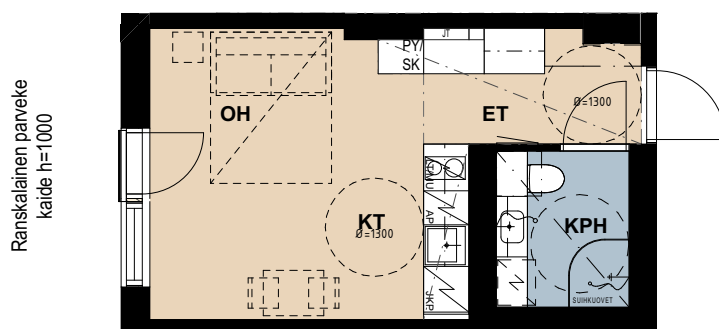
Lumo



# Asunto Oy Helsingin Liikkalankuja 4 Talo C

1H+KT 24,0 m<sup>2</sup>

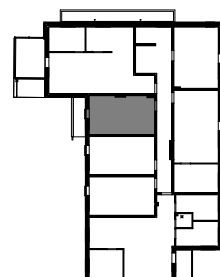
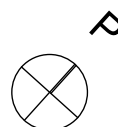
C62 2. krs



Mittakaava 1:100 5m

7.10.2022

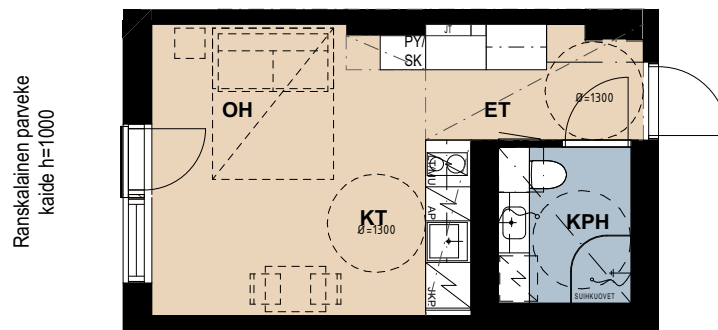
Lumo



# Asunto Oy Helsingin Liikkalankuja 4 Talo C

1H+KT 24,0 m<sup>2</sup>

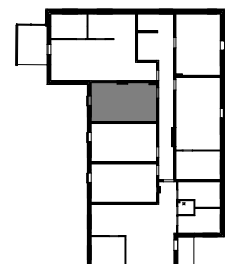
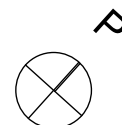
C69 3. krs



Mittakaava 1:100 5m

7.10.2022

Lumo

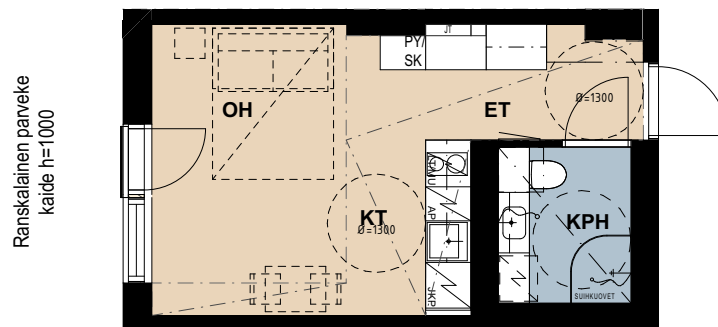




# Asunto Oy Helsingin Liikkalankuja 4 Talo C

1H+KT 24,0 m<sup>2</sup>

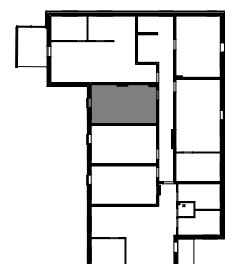
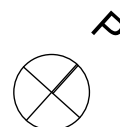
C76 4. krs  
C83 5. krs



Mittakaava 1:100 5m

7.10.2022

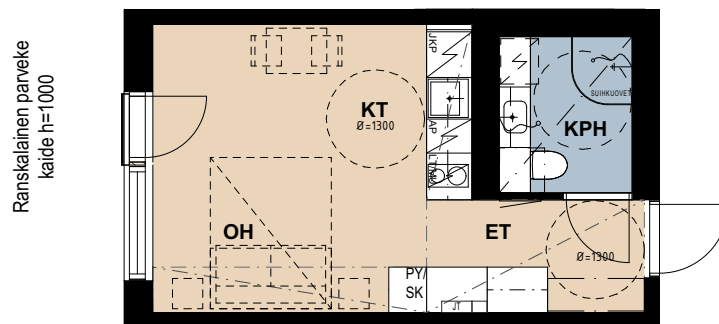
Lumo



# Asunto Oy Helsingin Liikkalankuja 4 Talo C

1H+KT 24,0 m<sup>2</sup>

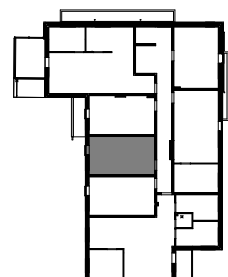
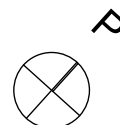
C63 2. krs  
C70 3. krs  
C77 4. krs  
C84 5. krs



Mittakaava 1:100 5m

7.10.2022

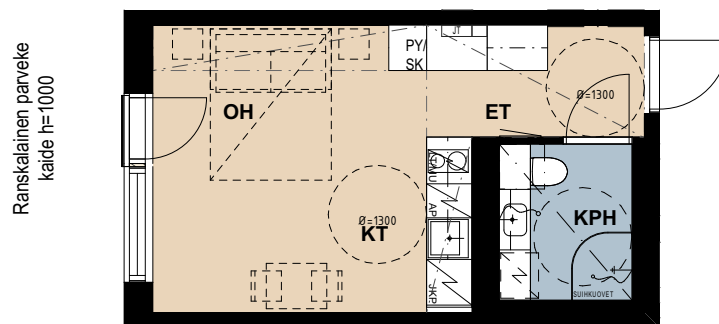
Lumo



# Asunto Oy Helsingin Liikkalankuja 4 Talo C

1H+KT 24,0 m<sup>2</sup>

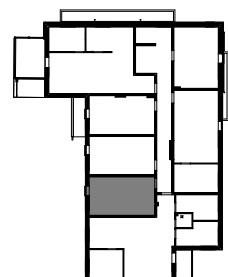
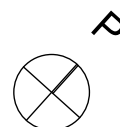
C64 2. krs  
C71 3. krs  
C78 4. krs



Mittakaava 1:100 5m

7.10.2022

Lumo



# Asunto Oy Helsingin Liikkalankuja 4 Talo C

2H+KT 37,0 m<sup>2</sup>

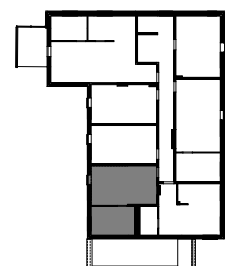
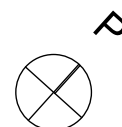
C85 5. krs



Mittakaava 1:100 5m

7.10.2022

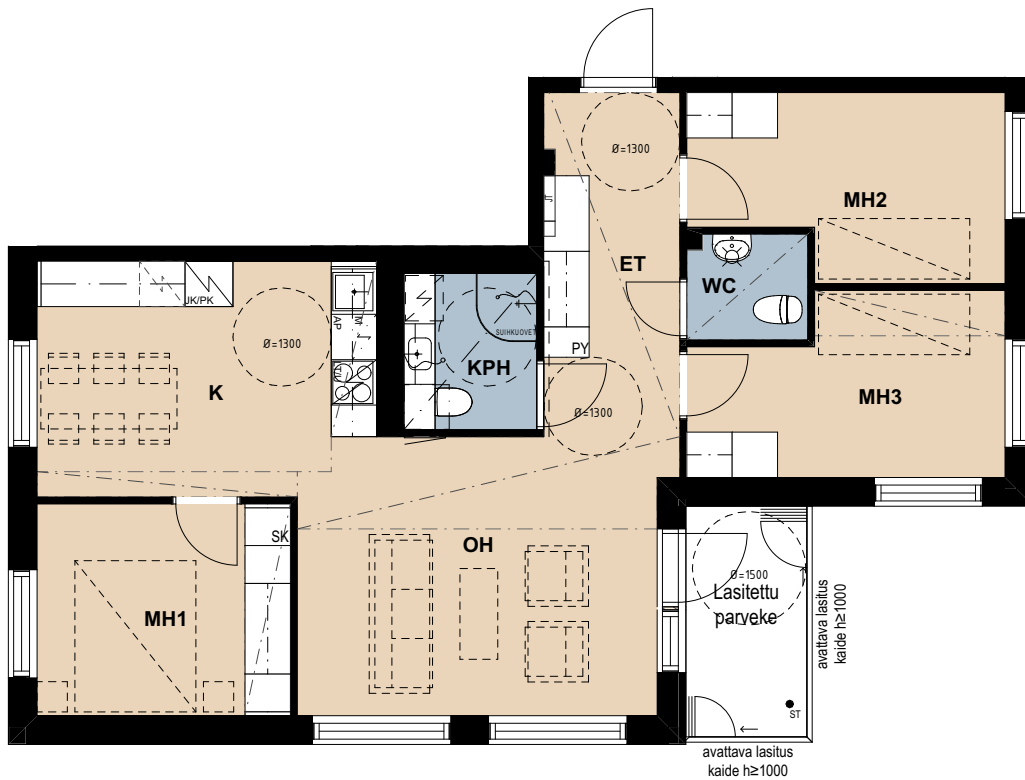
Lumo



# Asunto Oy Helsingin Liikkalankuja 4 Talo C

4H+K 75,0 m<sup>2</sup>

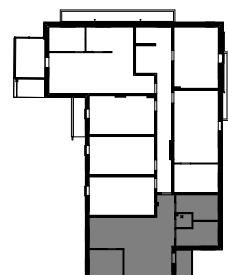
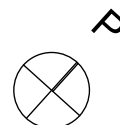
C65 2. krs



Mittakaava 1:100 5m

7.10.2022

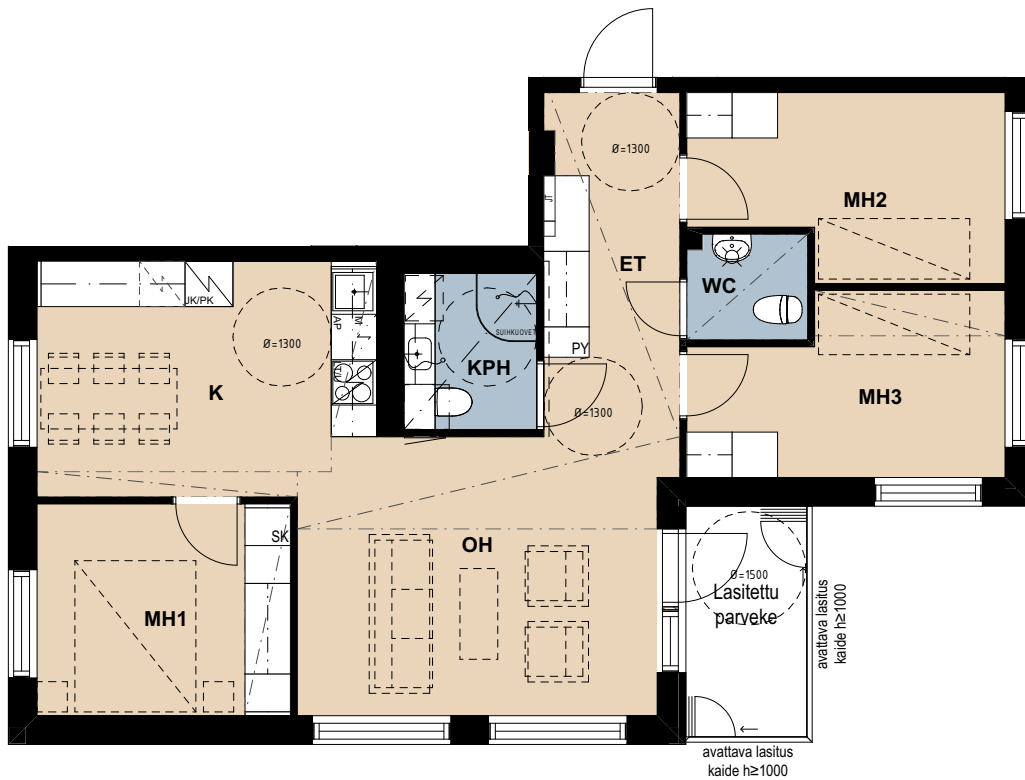
Lumo



# Asunto Oy Helsingin Liikkalankuja 4 Talo C

4H+K 75,0 m<sup>2</sup>

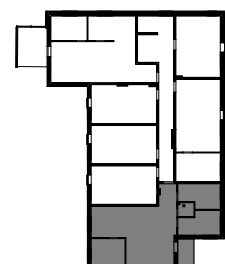
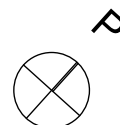
C72 3. krs



Mittakaava 1:100 5m

7.10.2022

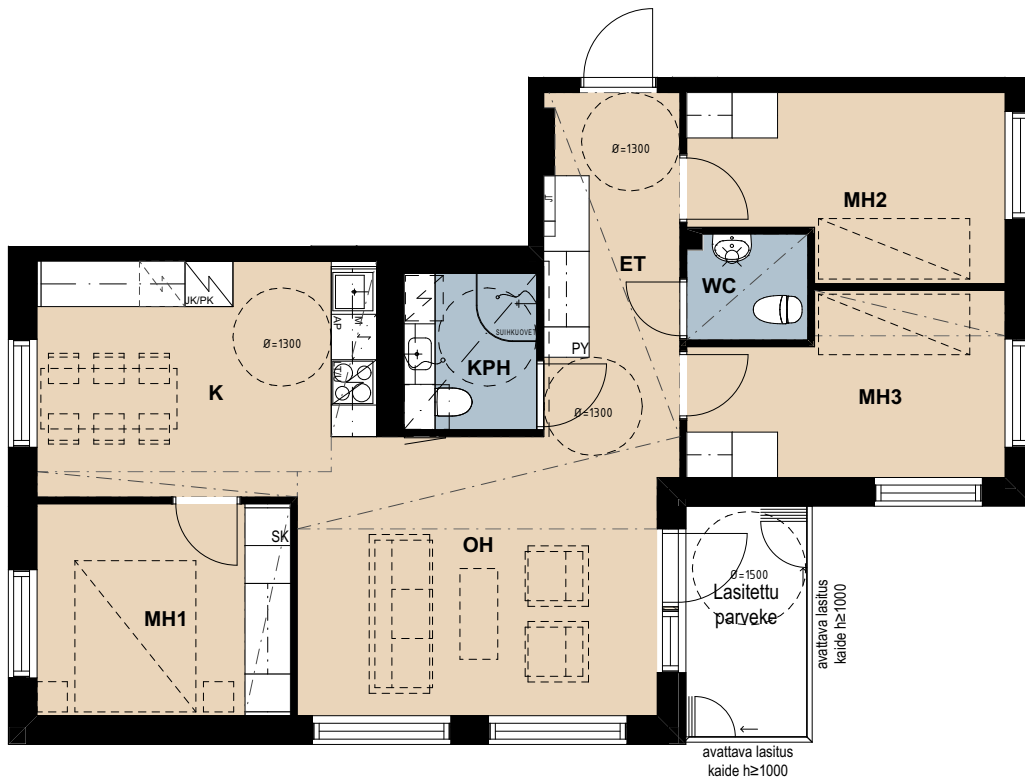
Lumo



# Asunto Oy Helsingin Liikkalankuja 4 Talo C

4H+K 75,0 m<sup>2</sup>

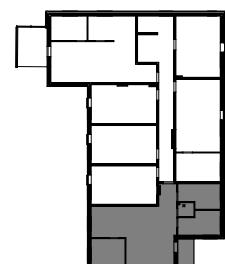
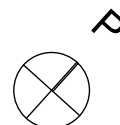
C79 4. krs



Mittakaava 1:100 5m

7.10.2022

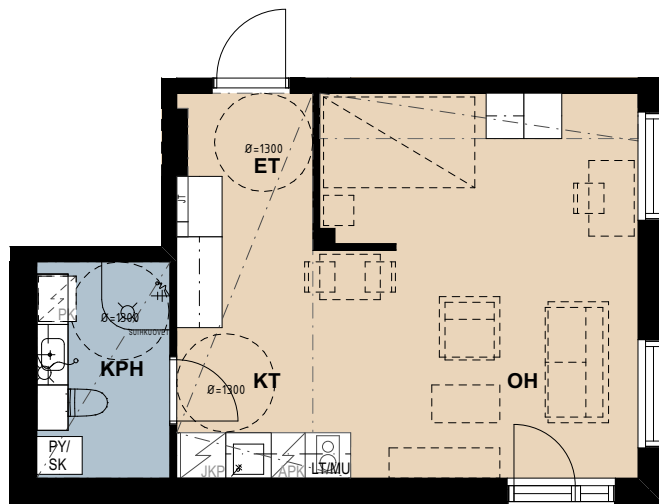
Lumo



# Asunto Oy Helsingin Liikkalankuja 4 Talo C

1H+KT 36,0 m<sup>2</sup>

C86 5. krs

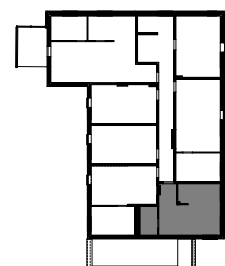
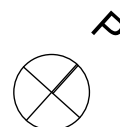


Ranskalainen parveke  
kaide h=1000

Mittakaava 1:100 5m

7.10.2022

Lumo

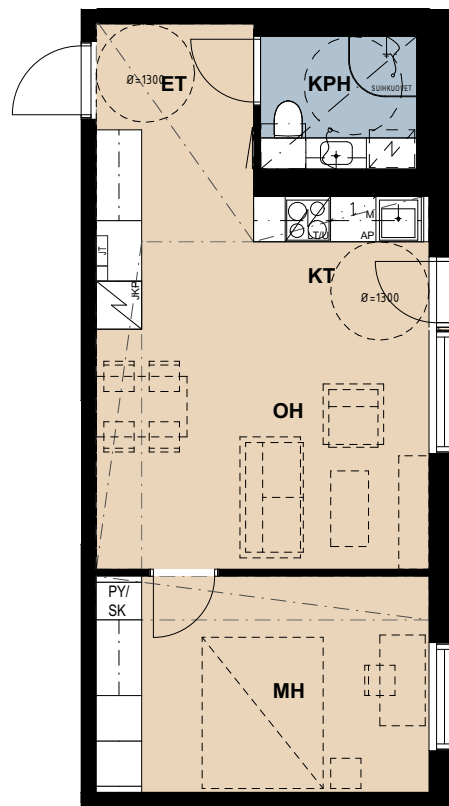




# Asunto Oy Helsingin Liikkalankuja 4 Talo C

2H+KT 44,0 m<sup>2</sup>

C66 2. krs  
C73 3. krs  
C80 4. krs  
C87 5. krs

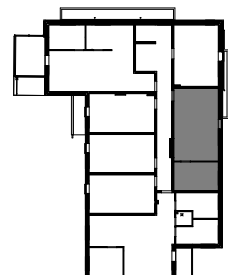
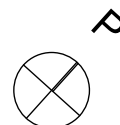


Ranskalainen parveke  
kaide h=1000

Mittakaava 1:100 5m

7.10.2022

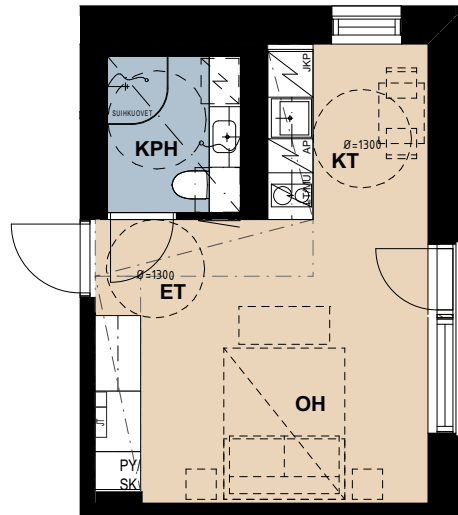
Lumo



# Asunto Oy Helsingin Liikkalankuja 4 Talo C

1H+KT 26,0 m<sup>2</sup>

C67 2. krs

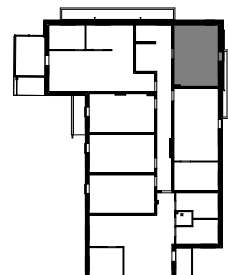
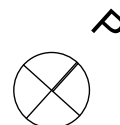


Ranskalainen parveke  
kaide h=1000

Mittakaava 1:100 5m

7.10.2022

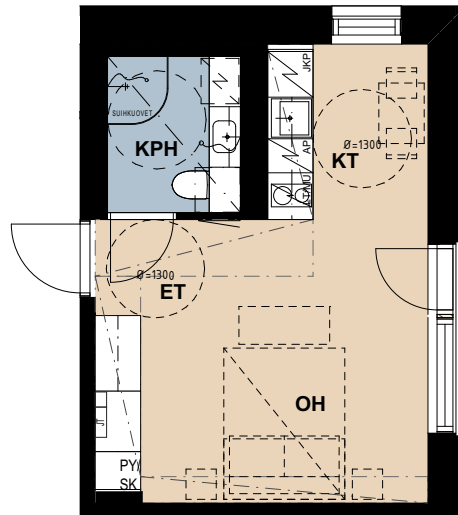
Lumo



# Asunto Oy Helsingin Liikkalankuja 4 Talo C

1H+KT 26,0 m<sup>2</sup>

C74 3. krs  
C81 4. krs  
C88 5. krs

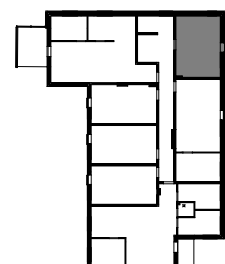
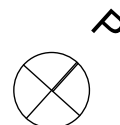


Ranskalainen parveke  
kaide h=1000

Mittakaava 1:100 5m





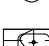
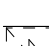

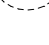
7.10.2022

Lumo



# Asunto Oy Helsingin Liikkalankuja 4

## Piirustusmerkkien selitykset

	Tankokaappi	<b>ET</b>	Eteinen
	Hyllykaappi	<b>MH</b>	Makuuhuone
	Pyykkikaappi	<b>OH</b>	Olohuone
	Siivouskomero	<b>KPH</b>	Kylpyhuone
	Keittiön pesuallas	<b>KT</b>	Keittotila
	Astianpesukone	<b>K</b>	Keittiö
	Liesitaso/uuni	<b>WC</b>	WC
	Jääkaappipakastin	<b>LWV</b>	Lastenvaunuvارasto
	Mikroaaltouuni	<b>UVV</b>	Ulkoiluvälinevarasto
	Jakotukit	<b>LH</b>	Löylyhuone
	Ryhmäkeskus	<b>IRT.VAR.</b>	Irtaimistovarasto
	WC-istuin	<b>LJH</b>	Lämmönjakuhuone
	Kylpyhuoneen pesuallas	<b>TELE/TEKN.</b>	Tele- / tekninen tila
	Varaus pyykinpesukoneelle	<b>PRSH</b>	Porrashuone
	Suihku ja suihkuovet	<b>SPK</b>	Sähköpääkeskus
	Pyörätuolin pyörähdysympyrä	<b>TALOVAR.</b>	Talovarasto
	Alakatto		
	Lattiakaivo		